

MACHIAS ELEMENTARY SCHOOL

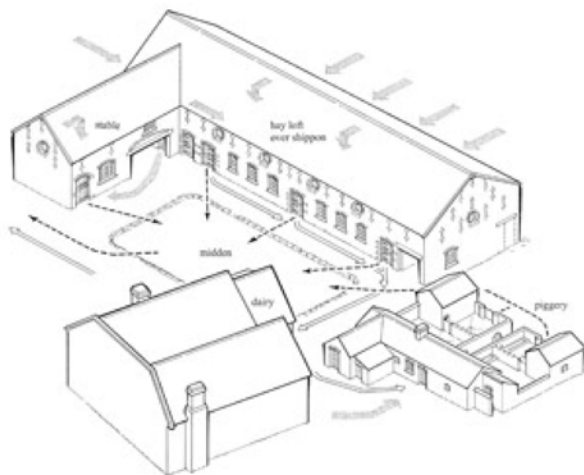
SCHOOLSTEAD

This is a school made for the rural setting at Machias.

What makes a school rural?

Can the idea of a farmstead be translated into a schoolstead?

- The layout of the buildings and site take their cues from the farmsteads in the area and the rural environment in general.
- The school is formed by three simple connected buildings located near the trees, with an open field in the forefront and semi-enclosing a central courtyard. This setting allows the building to be viewed across the fields, preserving the rural character of the area.
- The main office is set in front. Classrooms are laid out along the north side to get good natural light and to relate with the natural setting. The large gym building is set back, away from the street.
- The central courtyard connects the various school functions. It serves as an added opportunity for social space and an extended outdoor learning area. The main hallway wraps around the courtyard to connect the 3 sections of the school.
- The library is on the 2nd floor over the courtyard, adjacent to the classroom wing, with views of the valley and natural light on 3 sides.
- Classrooms are in groups of 4 around a shared area; each group flows along the main hallway.
- Visitor parking and drop-off are in front. The bus loop and staff parking are behind the gym to keep the front of the school open to the fields, while the buses and staff are closer to the classrooms.
- The Schoolstead scheme takes advantage of the large site area to provide a learning experience connected to fields and green space.





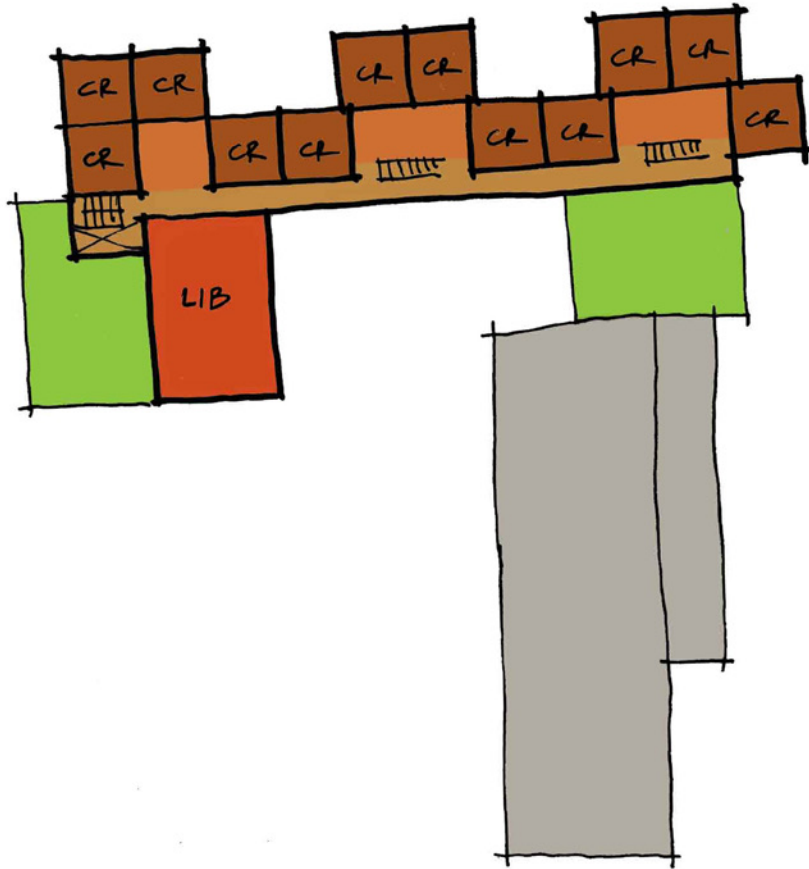


First Floor Plan

SCHOOLSTEAD

Machias Elementary School





Second Floor Plan