



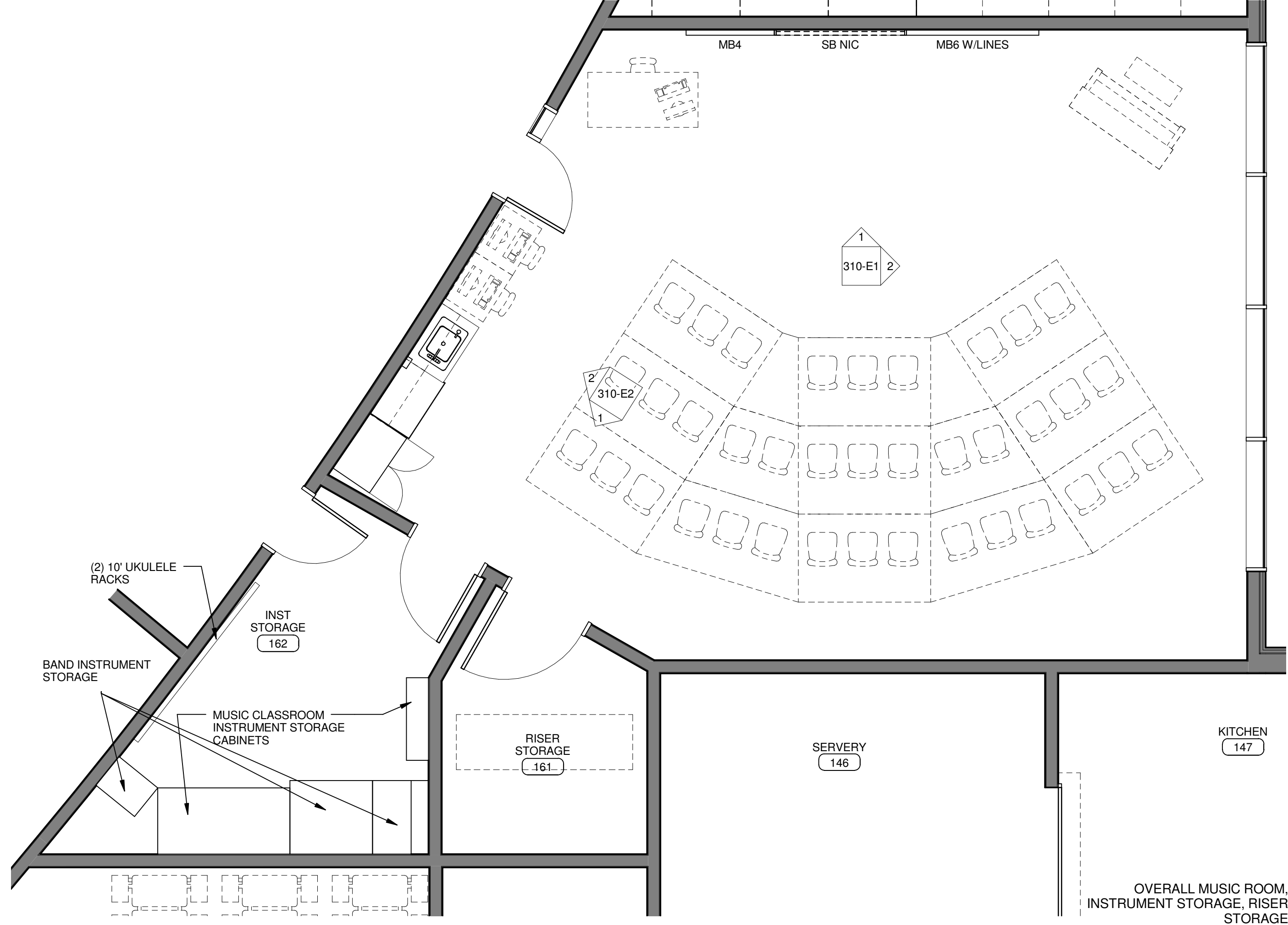
SNOHOMISH SCHOOL DISTRICT NO. 201
MACHIAS ELEMENTARY SCHOOL
 231 147TH AVE SE, SNOHOMISH, WA 98290

NAC ARCHITECTURE

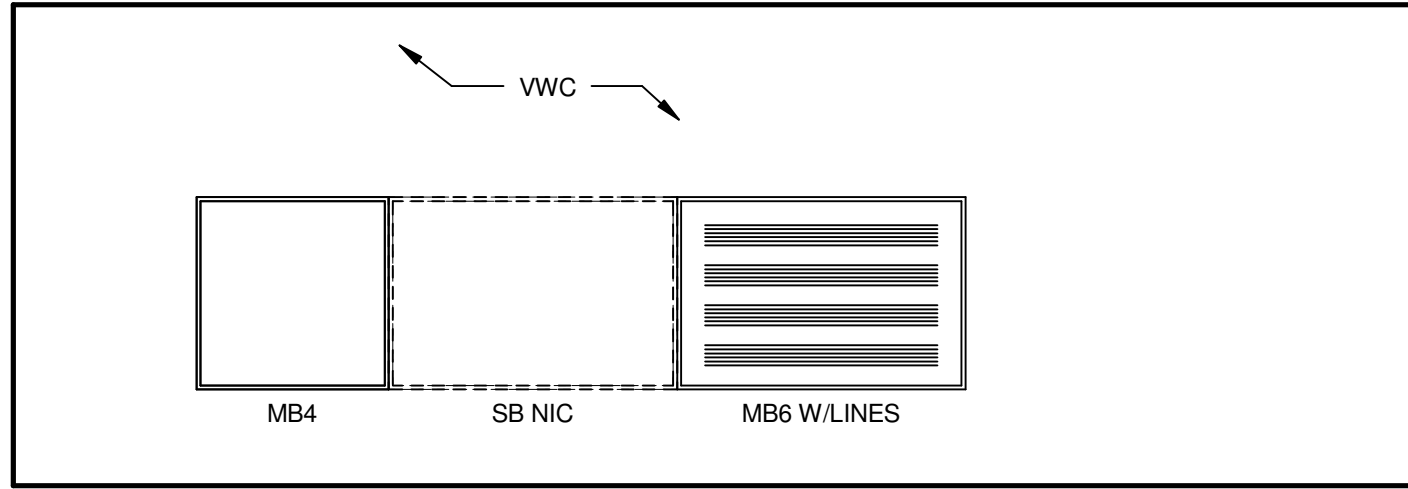
NAC NO: 121-08037
 DRAWN: Author
 CHECKED: Checker
 DATE: 02/04/09

DD
310

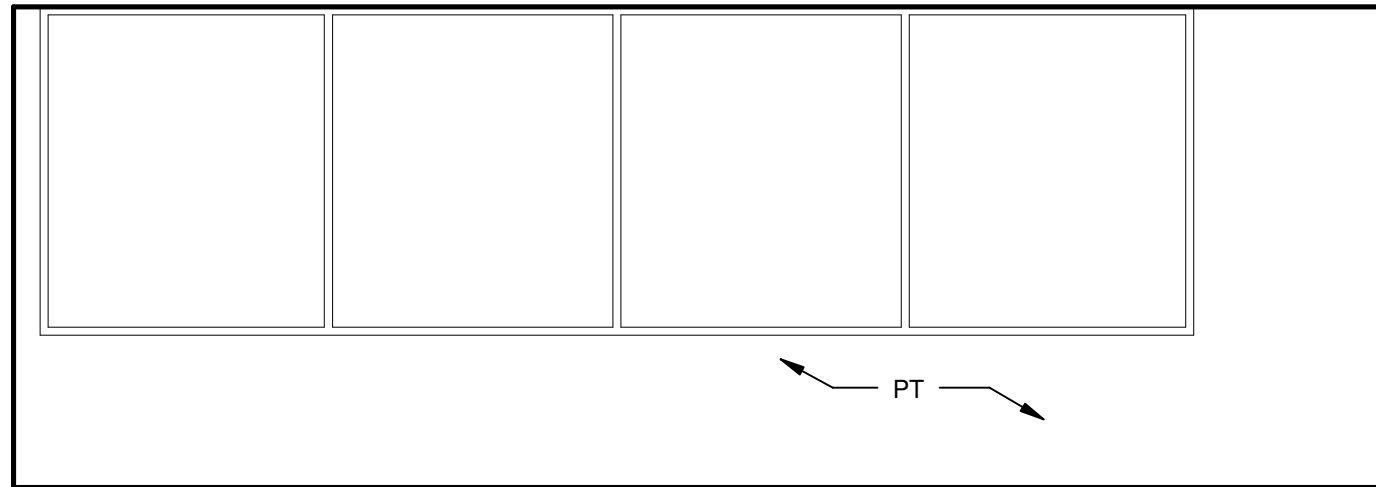
2201 SIXTH AVE, SUITE 1405 | SEATTLE, WA 98121-1847 | T: 206-441-4522 | F: 206-441-7917
 WWW.NACARCHITECTURE.COM



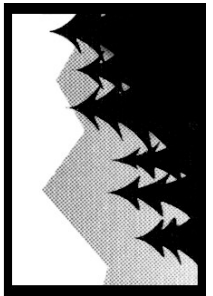
OVERALL MUSIC ROOM,
 INSTRUMENT STORAGE, RISER
 STORAGE



1 MUSIC ROOM - NORTH
 Scale: 1/4" = 1'-0"



2 MUSIC ROOM - EAST
 Scale: 1/4" = 1'-0"



SNOHOMISH SCHOOL DISTRICT NO. 201
**MACHIAS ELEMENTARY
 SCHOOL**
 231 147TH AVE SE, SNOHOMISH, WA 98290

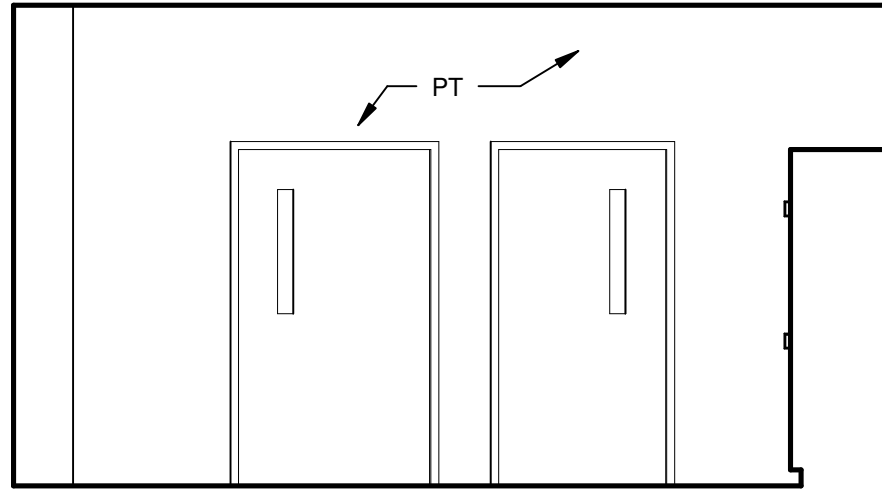
NAC ARCHITECTURE

NAC NO: 121-08037
 DRAWN: Author
 CHECKED: Checker
 DATE: 02/04/09

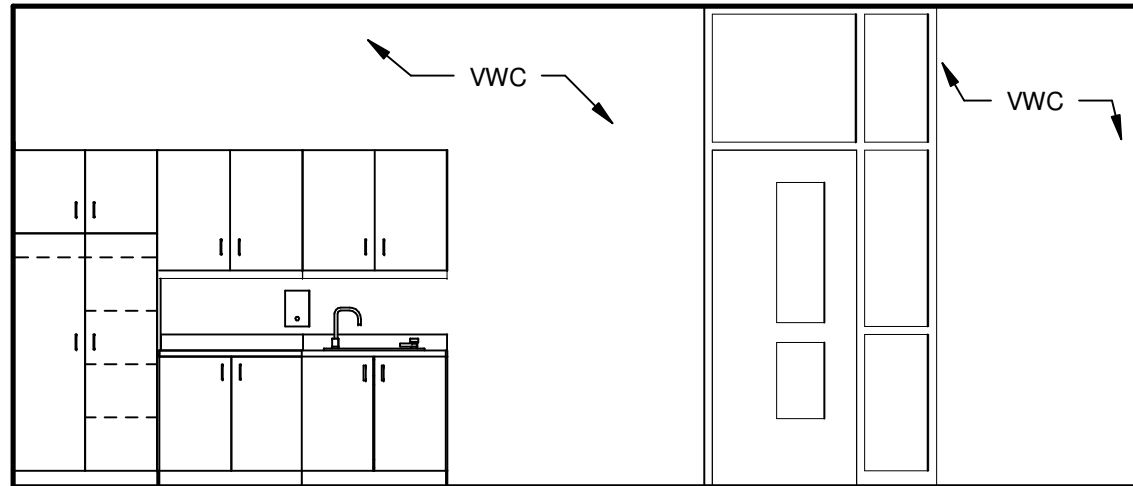
DD

310-E1

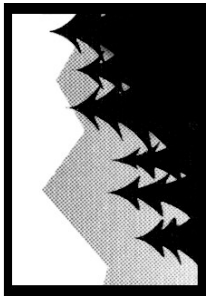
MUSIC CLASSROOM - INTERIOR
 ELEVATIONS



1 MUSIC ROOM - SOUTH
 Scale: 1/4" = 1'-0"



2 MUSIC ROOM - WEST
 Scale: 1/4" = 1'-0"



SNOHOMISH SCHOOL DISTRICT NO. 201
**MACHIAS ELEMENTARY
 SCHOOL**
 231 147TH AVE SE, SNOHOMISH, WA 98290

NAC | ARCHITECTURE

NAC NO: 121-08037
 DRAWN: Author
 CHECKED: Checker
 DATE: 02/04/09

DD

310-E2

MUSIC CLASSROOM - INTERIOR
 ELEVATIONS



SNOHOMISH SCHOOL DISTRICT NO. 201
**MACHIAS ELEMENTARY
 SCHOOL**
 231 147TH AVE SE, SNOHOMISH, WA 98290

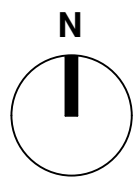
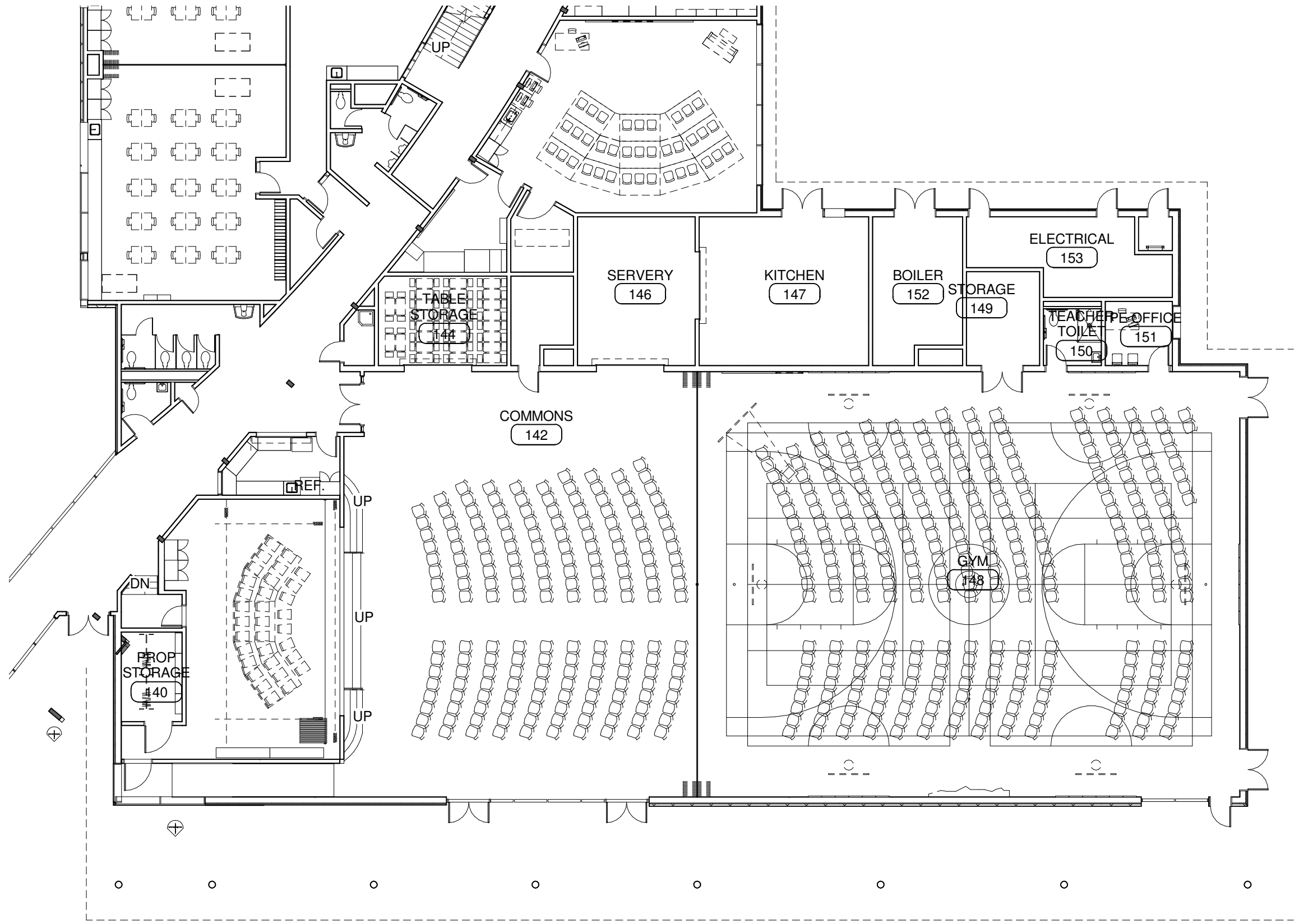
NAC ARCHITECTURE

NAC NO 121-08037
 DRAWN Author
 CHECKED Checker
 DATE: 02/04/09

**DD
 401**

© 2009 NAC INC

2201 SIXTH AVE, SUITE 1405 | SEATTLE, WA 98121-1847 | T206-441-4522 | F206-441-7917
 WWW.NACARCHITECTURE.COM



OVERALL GYM, COMMONS, STAGE



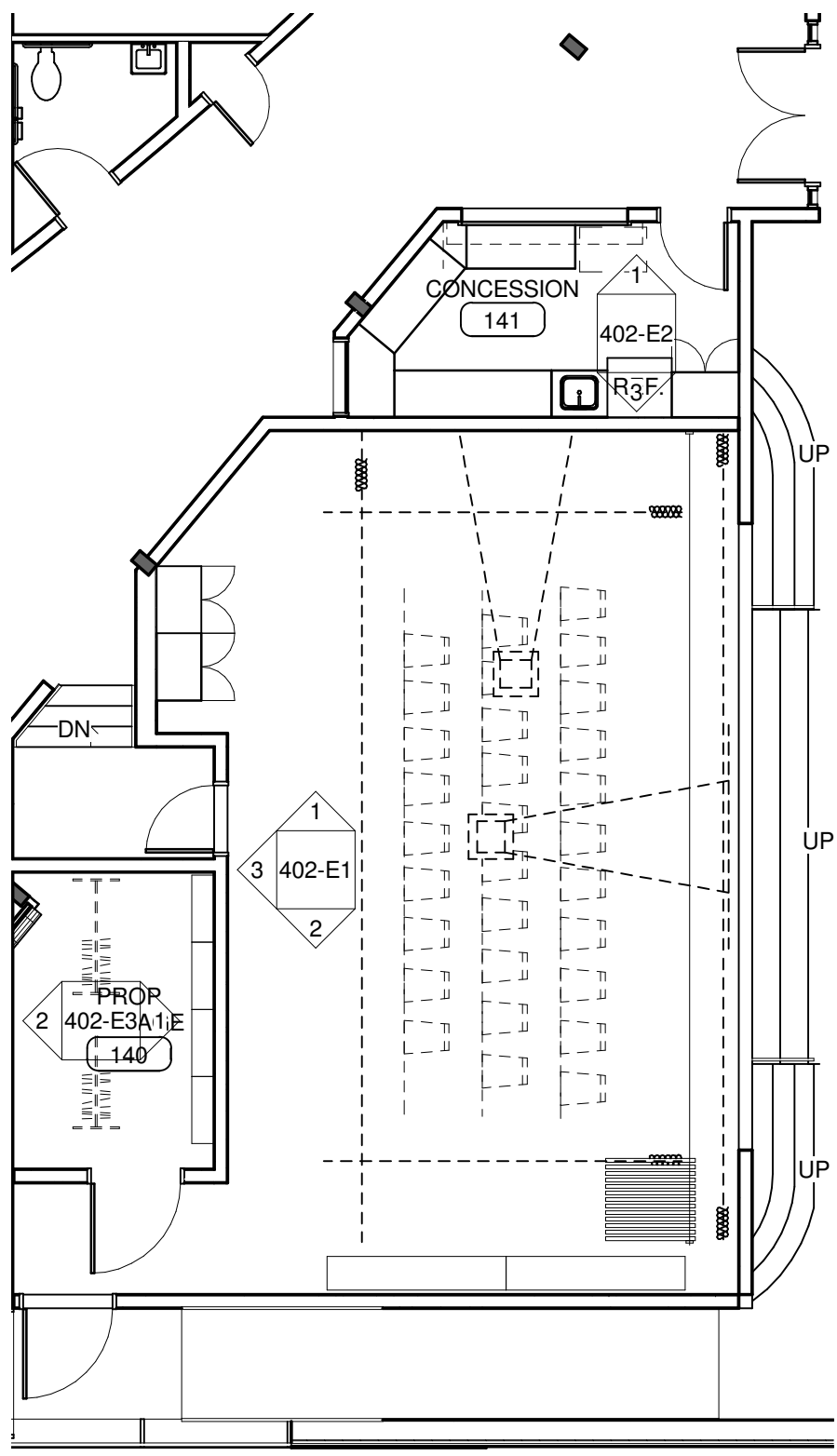
SNOHOMISH SCHOOL DISTRICT NO. 201
**MACHIAS ELEMENTARY
 SCHOOL**
 231 147TH AVE SE, SNOHOMISH, WA 98290

NAC | ARCHITECTURE

NAC NO: 121-08037
 DRAWN: Author
 CHECKED: Checker
 DATE: 02/04/09

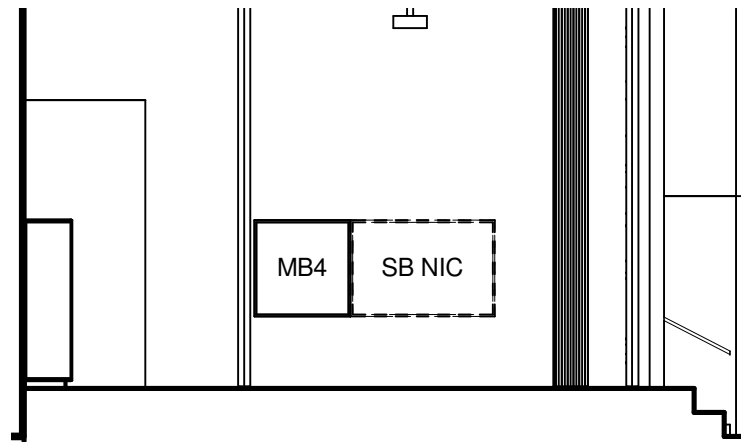
DD
402

© 2009 NAC INC
 2201 SIXTH AVE, SUITE 1405 | SEATTLE, WA 98121-1847 | T206-441-4522 | F206-441-7917
 WWW.NACARCHITECTURE.COM

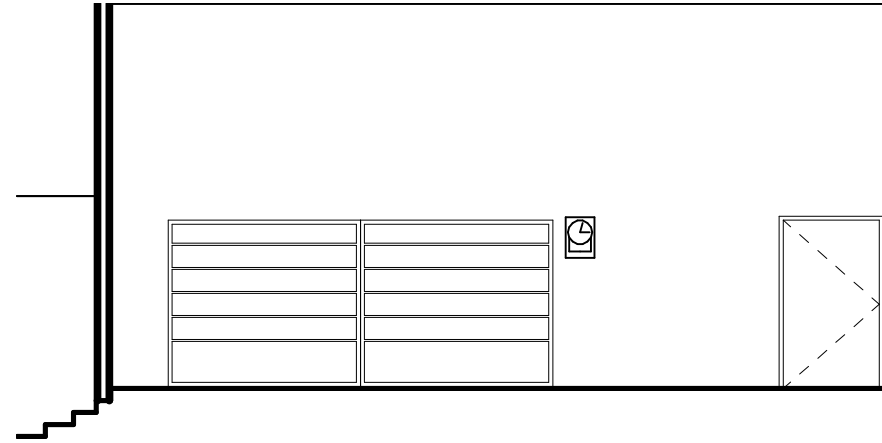


1 403 - STAGE
 Scale: 1/8" = 1'-0"

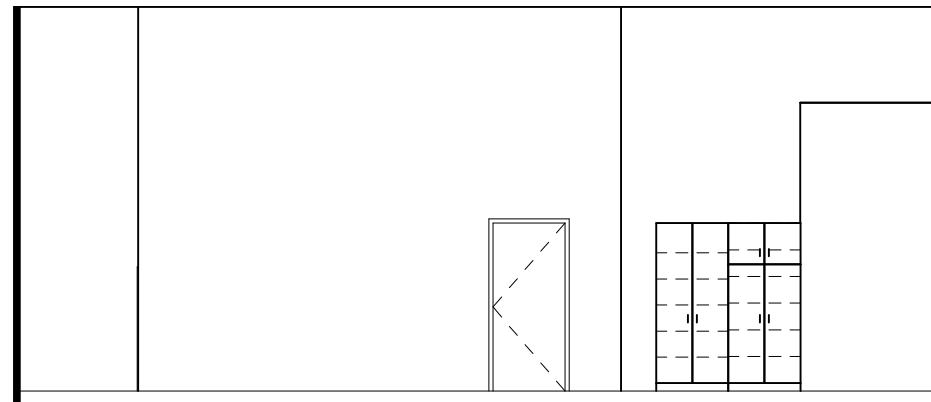
STAGE, CONCESSION



1 STAGE - NORTH
Scale: 1/8" = 1'-0"



2 STAGE - SOUTH
Scale: 1/8" = 1'-0"



3 STAGE - WEST
Scale: 1/8" = 1'-0"



SNOHOMISH SCHOOL DISTRICT NO. 201
**MACHIAS ELEMENTARY
SCHOOL**
231 147TH AVE SE, SNOHOMISH, WA 98290

NMAC ARCHITECTURE

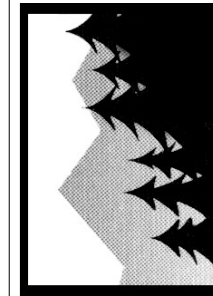
NAC NO 121-08037
DRAWN Author
CHECKED Checker
DATE: 02/04/09

DD
402-E1

STAGE ELEVATIONS

© 2009 NMAC INC

2201 SIXTH AVE, SUITE 1405 | SEATTLE, WA 98121-1847 | T206-441-4522 | F206-441-7917
WWW.NMACARCHITECTURE.COM



SNOHOMISH SCHOOL DISTRICT NO. 201
**MACHIAS ELEMENTARY
 SCHOOL**
 231 147TH AVE SE, SNOHOMISH, WA 98290

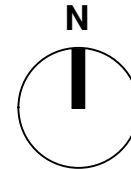
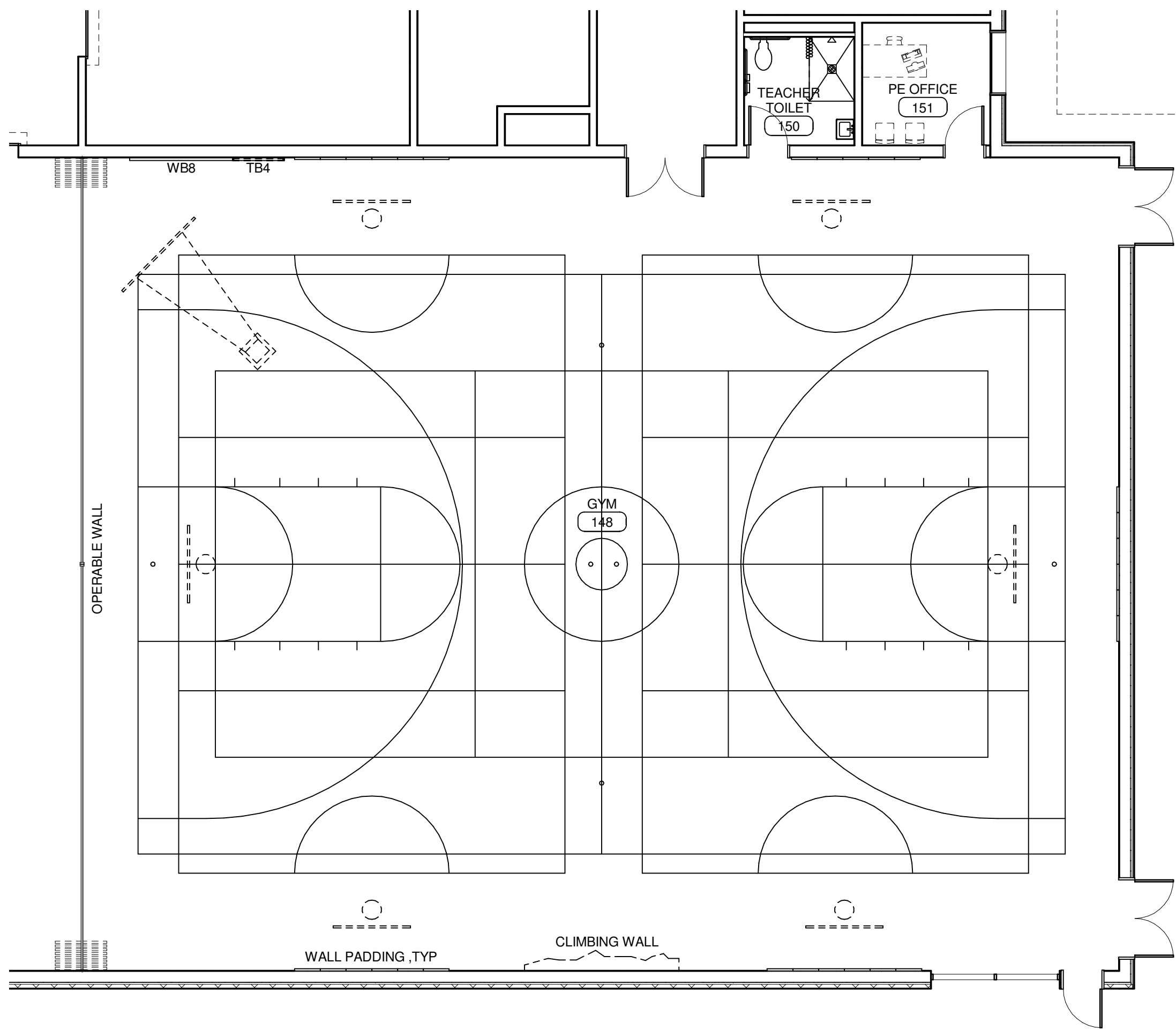
NAC | ARCHITECTURE

NAC NO: 121-08037
 DRAWN: Author
 CHECKED: Checker
 DATE: 02/04/09

**DD
 403**

© 2009 NAC INC

WWW.NACARCHITECTURE.COM 2201 SIXTH AVE, SUITE 1405 | SEATTLE, WA 98121-1847 | T:206-441-4522 | F:206-441-7917



GYM, PE OFFICE & STORAGE



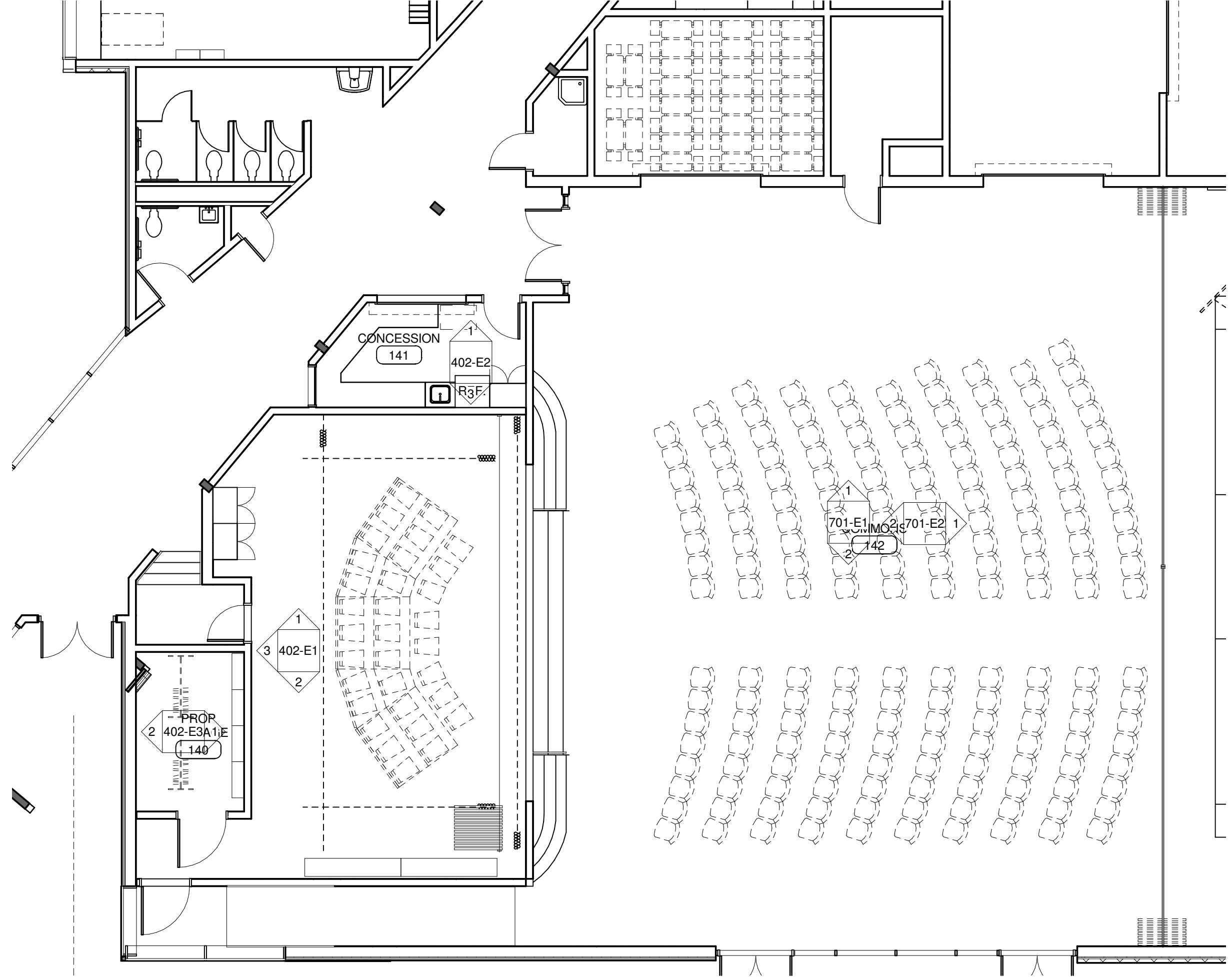
SNOHOMISH SCHOOL DISTRICT NO. 201
**MACHIAS ELEMENTARY
 SCHOOL**
 231 147TH AVE SE, SNOHOMISH, WA 98290

NAC ARCHITECTURE

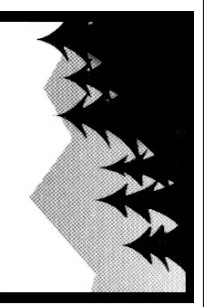
NAC NO: 121-08037
 DRAWN: Author
 CHECKED: Checker
 DATE: 02/04/09

**DD
 701**

© 2009 NAC INC WWW.NACARCHITECTURE.COM 2301 SIXTH AVE, SUITE 1405 | SEATTLE, WA 98121-1847 | T206-441-4522 | F206-441-7917



COMMONS AND STORAGE



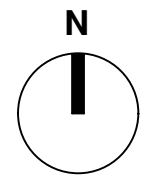
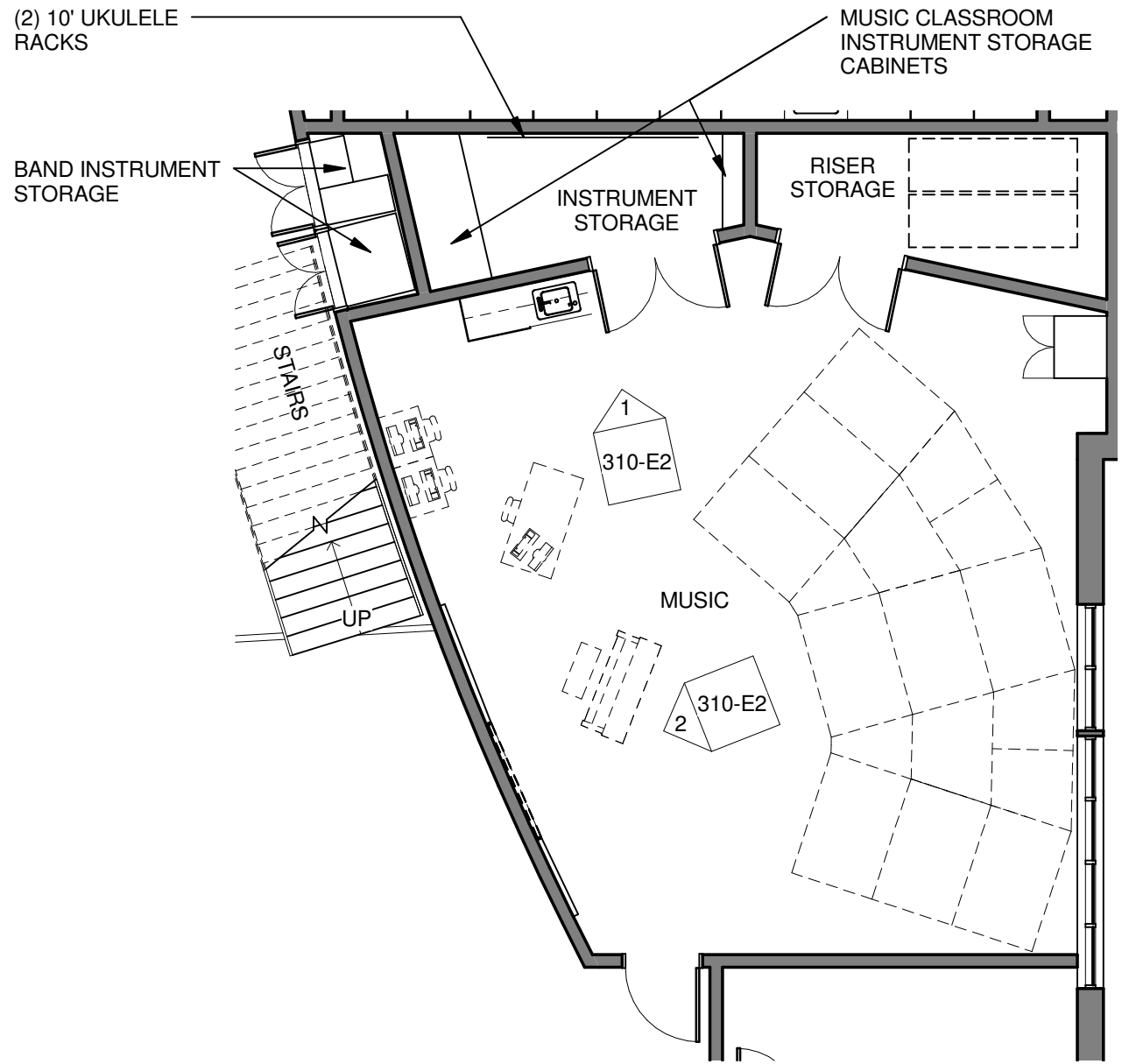
SNOHOMISH SCHOOL DISTRICT NO. 201
**RIVERVIEW ELEMENTARY
 SCHOOL**
 7322 64TH STREET SE, SNOHOMISH, WA 98290

NAC ARCHITECTURE

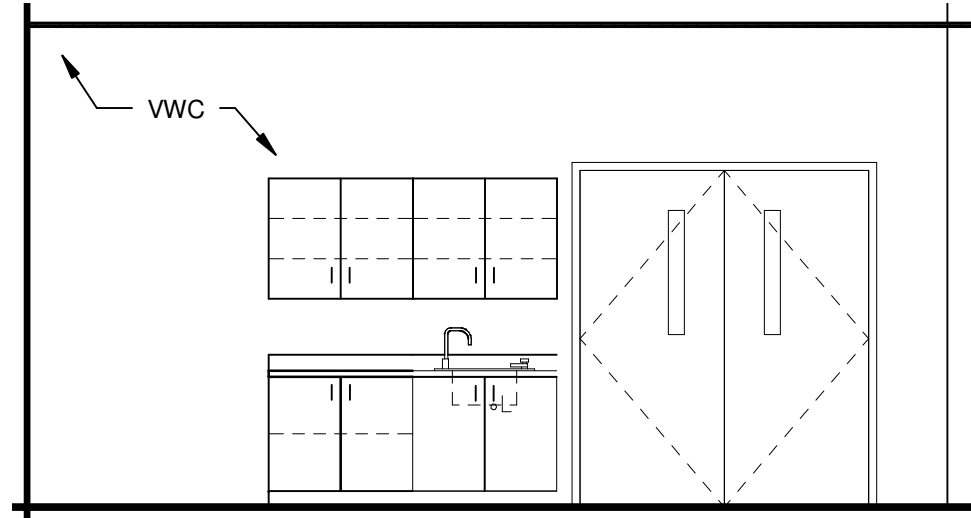
NAC NO 121-08038
 DRAWN Author
 CHECKED Checker
 DATE: 02/04/2009

DD
310

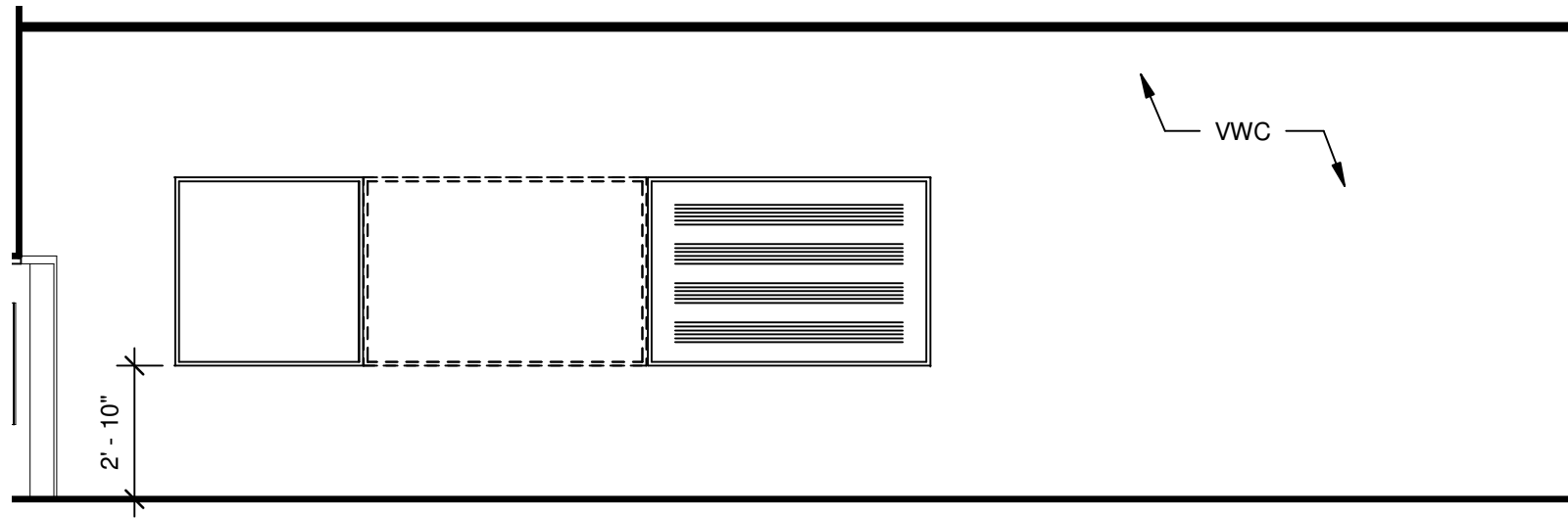
© 2009 NAC INC WWW.NACARCHITECTURE.COM 2201 SIXTH AVE, SUITE 1405 | SEATTLE, WA 98121-1847 | T:206.441.4522 | F:206.441.7917



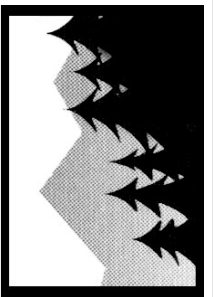
MUSIC CLASSROOM



1 MUSIC - NORTH
Scale: 1/4" = 1'-0"



2 MUSIC - WEST
Scale: 1/4" = 1'-0"



SNOHOMISH SCHOOL DISTRICT NO. 201
**RIVERVIEW ELEMENTARY
SCHOOL**
7322 64TH STREET SE, SNOHOMISH, WA 98290

NAC ARCHITECTURE

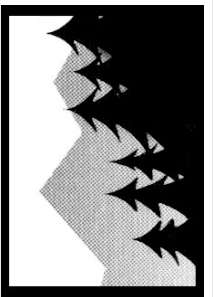
2201 SIXTH AVE, SUITE 1405 | SEATTLE, WA 98121-1847 | T:206.441.4522 | F:206.441.7917

NAC NO	121-08038
DRAWN	Author
CHECKED	Checker
DATE:	02/04/2009

DD

310-E2

MUSIC CLASSROOM INTERIOR
ELEVATIONS



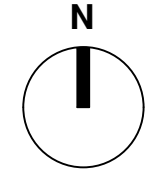
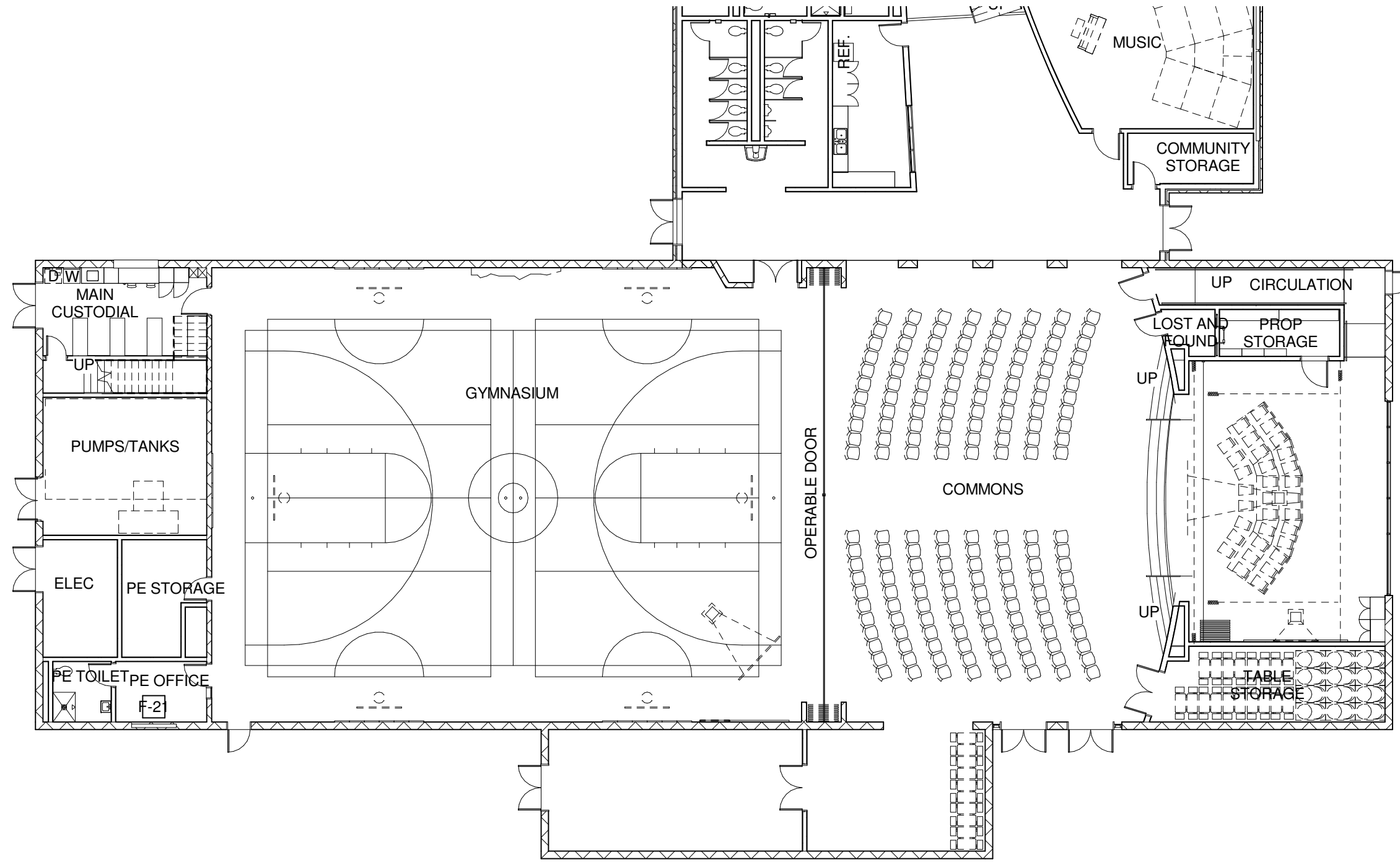
SNOHOMISH SCHOOL DISTRICT NO. 201
**RIVERVIEW ELEMENTARY
 SCHOOL**
 7322 64TH STREET SE, SNOHOMISH, WA 98290

NAC ARCHITECTURE

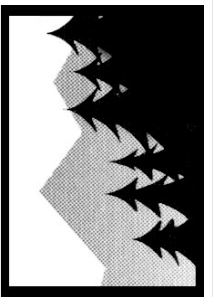
NAC NO 121-08038
 DRAWN Author
 CHECKED Checker
 DATE: 02/04/2009

**DD
 401**

2201 SIXTH AVE, SUITE 1405 | SEATTLE, WA 98121-1847 | T:206.441.4522 | F:206.441.7917
 WWW.NACARCHITECTURE.COM



OVERALL GYMNASIUM, COMMONS,
 STAGE



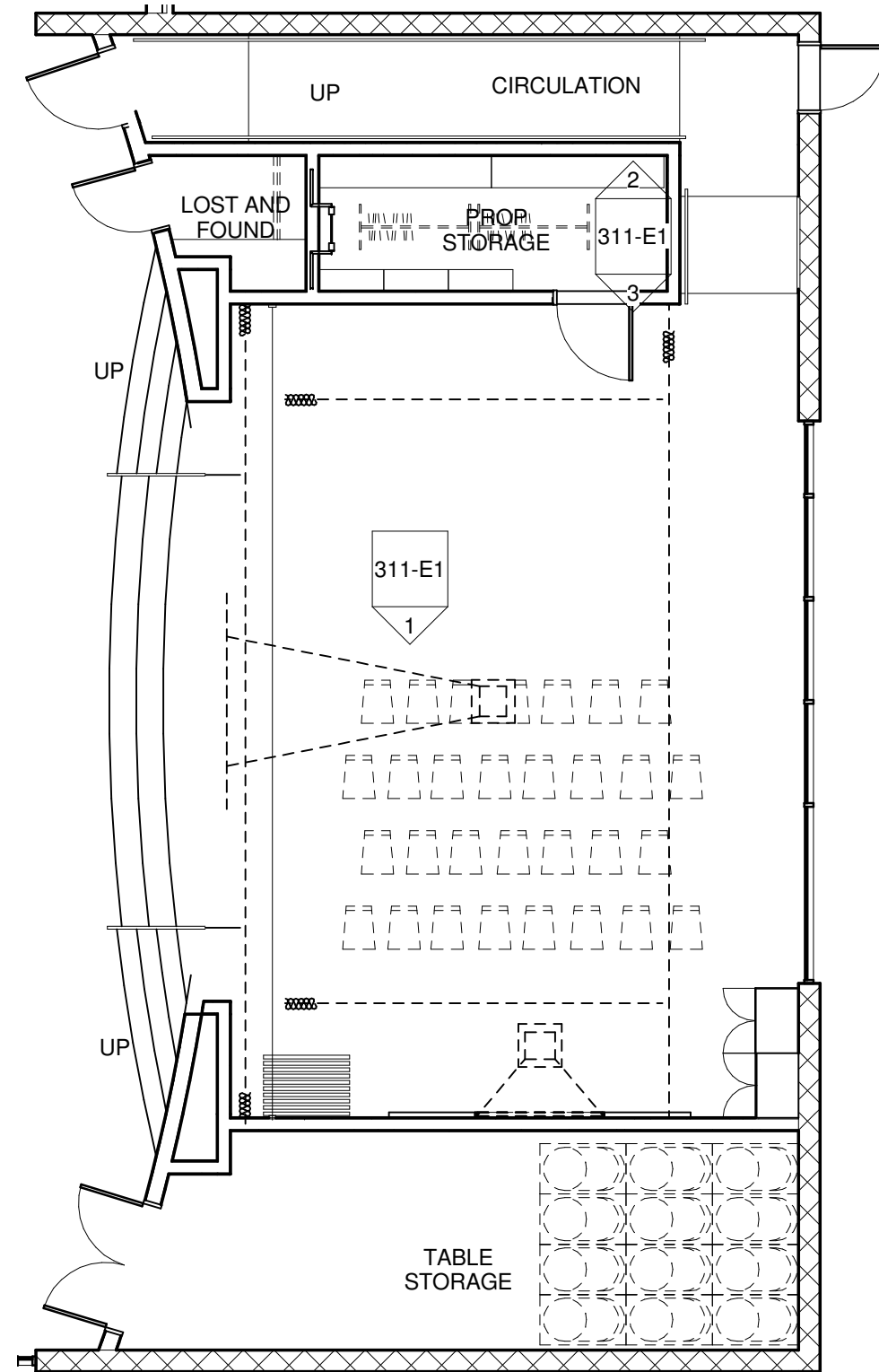
SNOHOMISH SCHOOL DISTRICT NO. 201
**RIVERVIEW ELEMENTARY
 SCHOOL**
 7322 64TH STREET SE, SNOHOMISH, WA 98290

NAC ARCHITECTURE

NAC NO: 121-08038
 DRAWN: Author
 CHECKED: Checker
 DATE: 02/04/2009

**DD
 311**

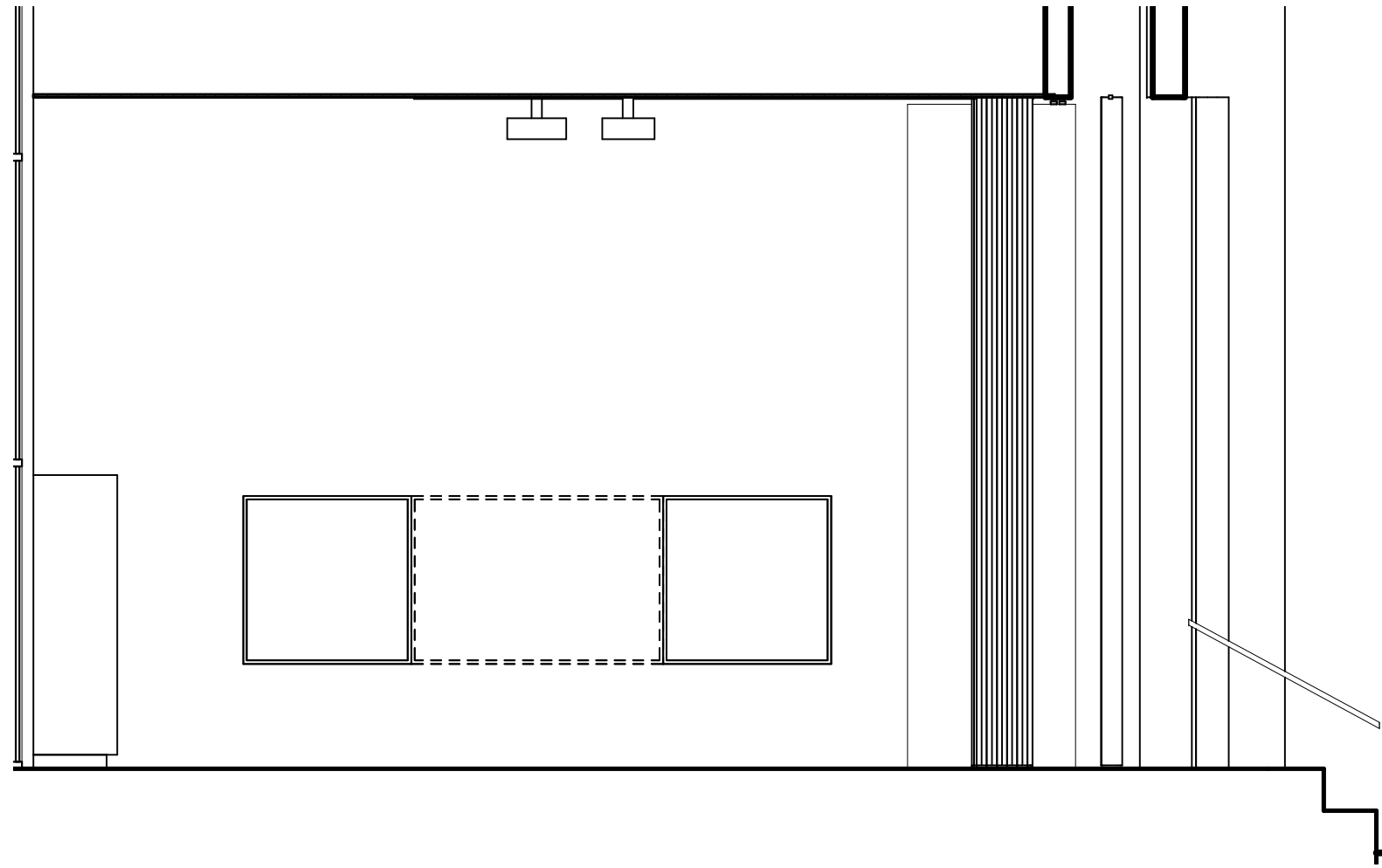
WWW.NACARCHITECTURE.COM



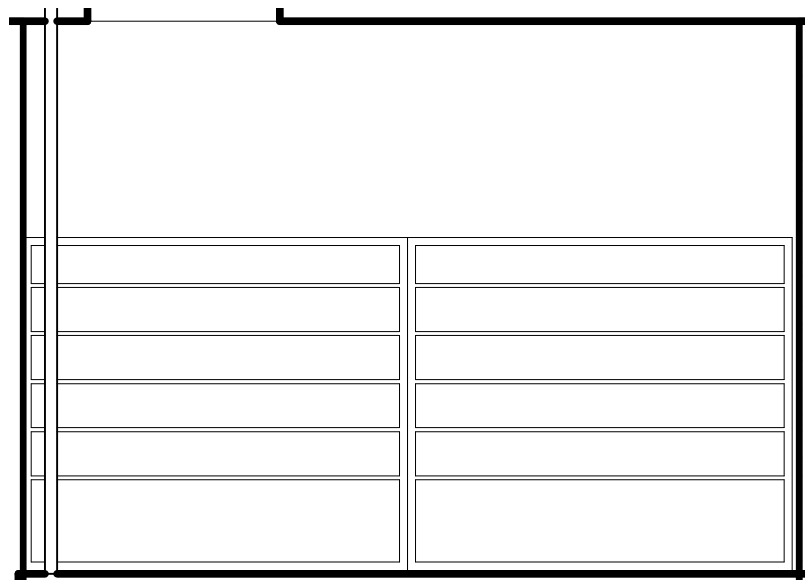
N
311 - STAGE
 Scale: 1/8" = 1'-0"

STAGE

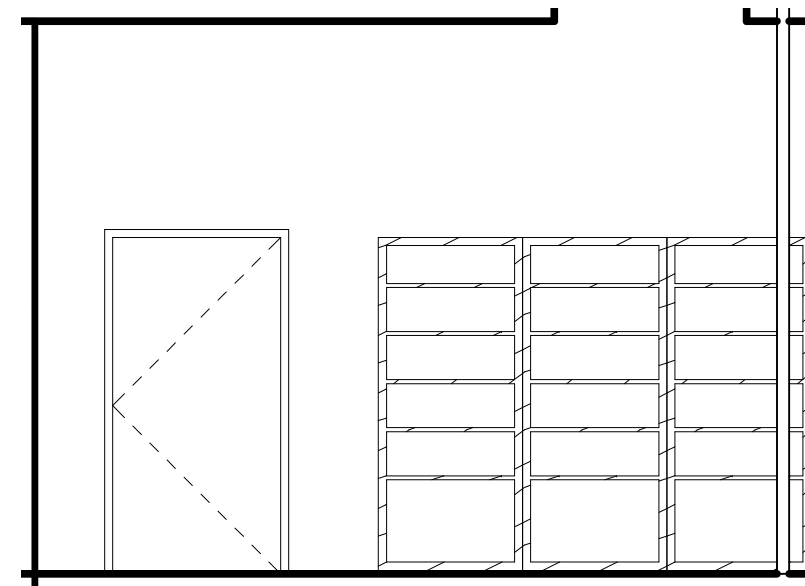
© 2009 NAC INC



1 STAGE - SOUTH
Scale: 1/4" = 1'-0"



2 PROP STORAGE - NORTH
Scale: 1/4" = 1'-0"



3 PROP STORAGE - SOUTH
Scale: 1/4" = 1'-0"

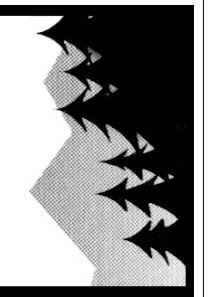
STAGE & PROP STORAGE
ELEVATIONS

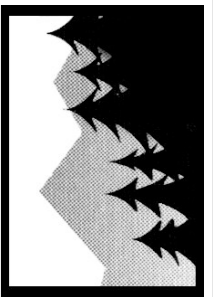
SNOHOMISH SCHOOL DISTRICT NO. 201
**RIVERVIEW ELEMENTARY
SCHOOL**
7322 64TH STREET SE, SNOHOMISH, WA 98290

NAC ARCHITECTURE

NAC NO: 121-08038
DRAWN: Author
CHECKED: Checker
DATE: 02/04/2009

DD
311-E1





SNOHOMISH SCHOOL DISTRICT NO. 201
**RIVERVIEW ELEMENTARY
 SCHOOL**
 7322 64TH STREET SE, SNOHOMISH, WA 98290

NAC ARCHITECTURE

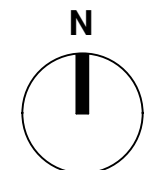
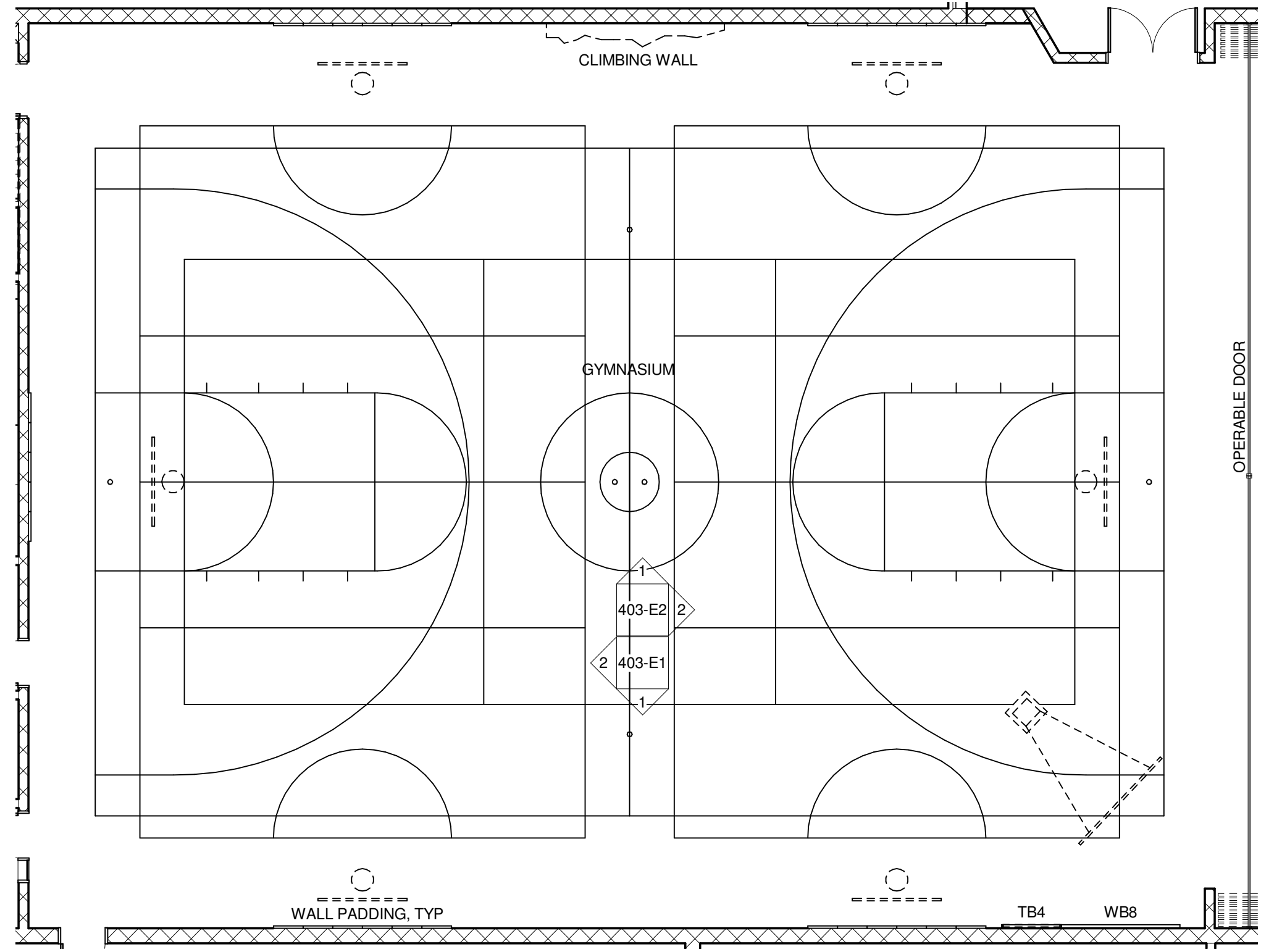
NAC NO: 121-08038
 DRAWN: Author
 CHECKED: Checker
 DATE: 02/04/2009

**DD
 403**

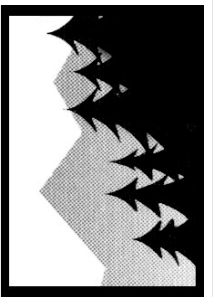
© 2009 NAC INC

WWW.NACARCHITECTURE.COM

1
 901-E1
 3



GYMNASIUM



SNOHOMISH SCHOOL DISTRICT NO. 201
**RIVERVIEW ELEMENTARY
 SCHOOL**
 7322 64TH STREET SE, SNOHOMISH, WA 98290

NAC | ARCHITECTURE

NAC NO 121-08038
 DRAWN Author
 CHECKED Checker
 DATE: 02/04/2009

**DD
 701**

WWW.NACARCHITECTURE.COM

2201 SIXTH AVE, SUITE 1405 | SEATTLE, WA 98121-1847 | T:206.441.4522 | F:206.441.7917

© 2009 NAC INC

COMMONS

