

SNOHOMISH SCHOOL DISTRICT NO. 201  
**MACHIAS ELEMENTARY  
 SCHOOL**  
 231 147TH AVE SE, SNOHOMISH, WA 98290

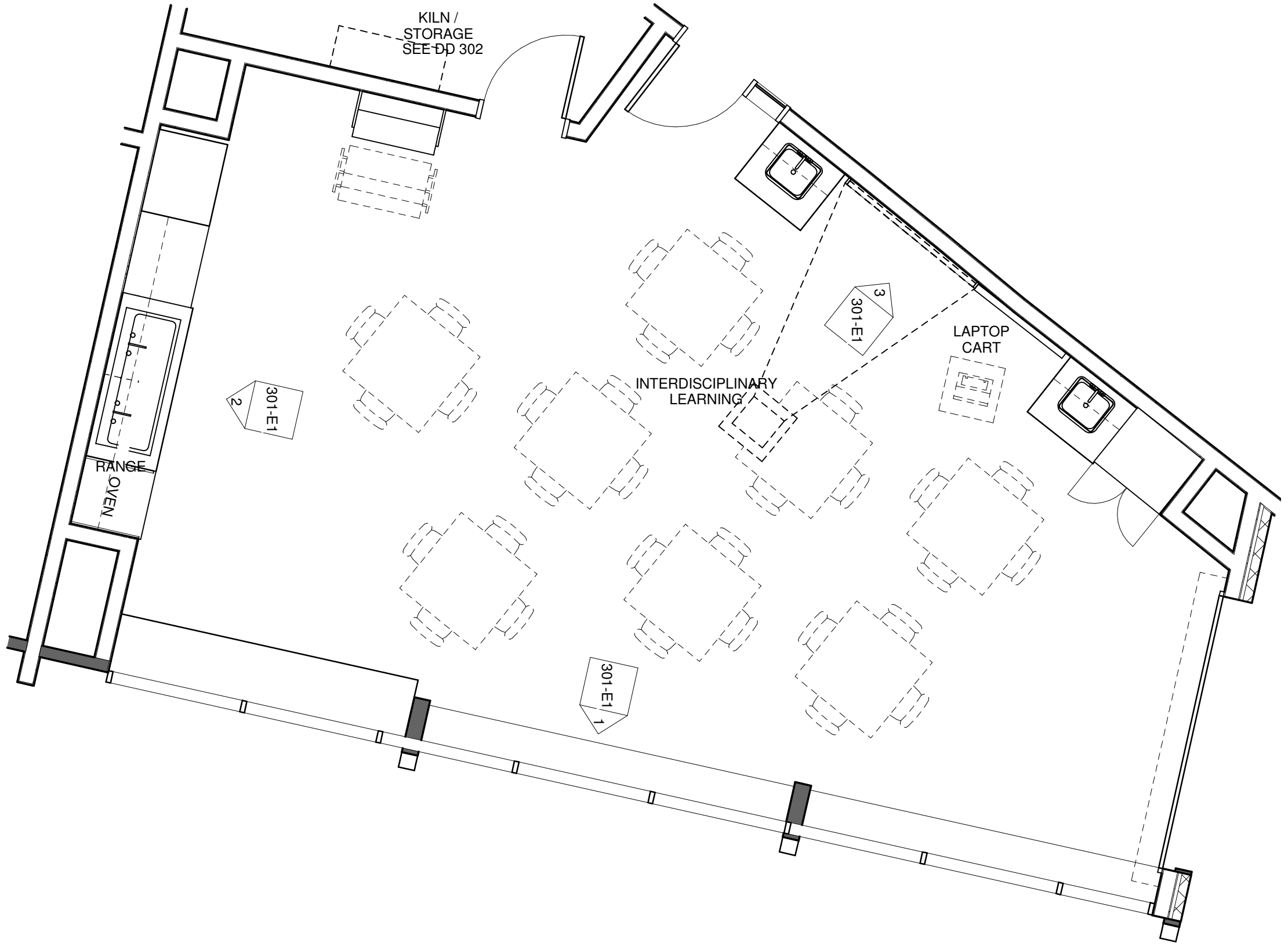
**NAC** ARCHITECTURE

NAC NO: 121-08037  
 DRAWN: Author  
 CHECKED: Checker  
 DATE: 02/04/09

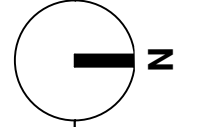
**DD  
 301**

WWW.NACARCHITECTURE.COM 2201 SIXTH AVE, SUITE 1405 | SEATTLE, WA 98121-1847 | T206-441-4522 | F206-441-7917

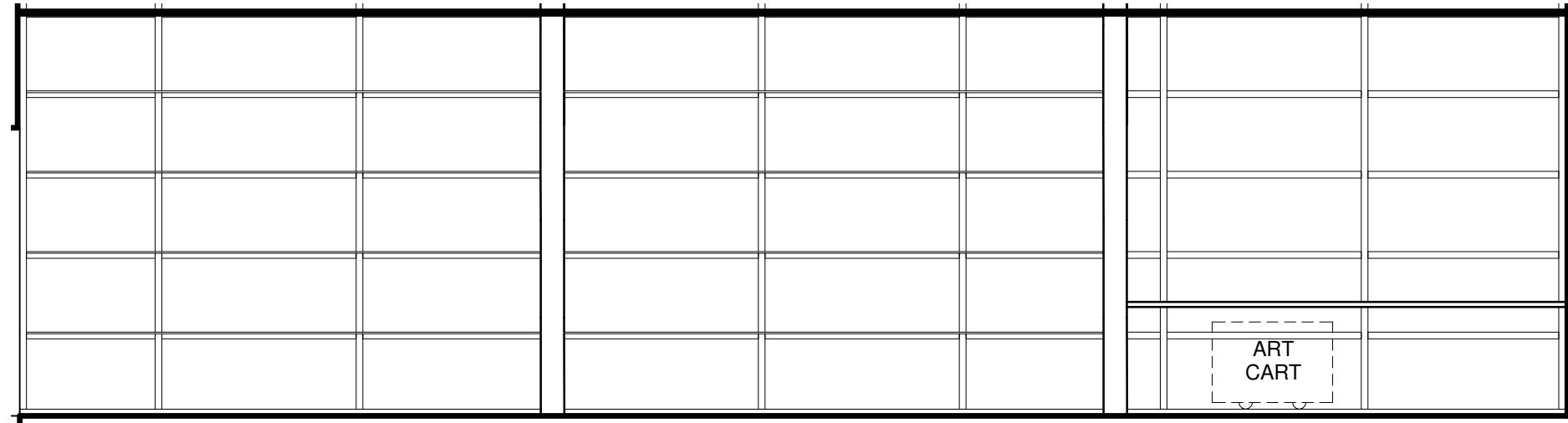
© 2009 NAC INC



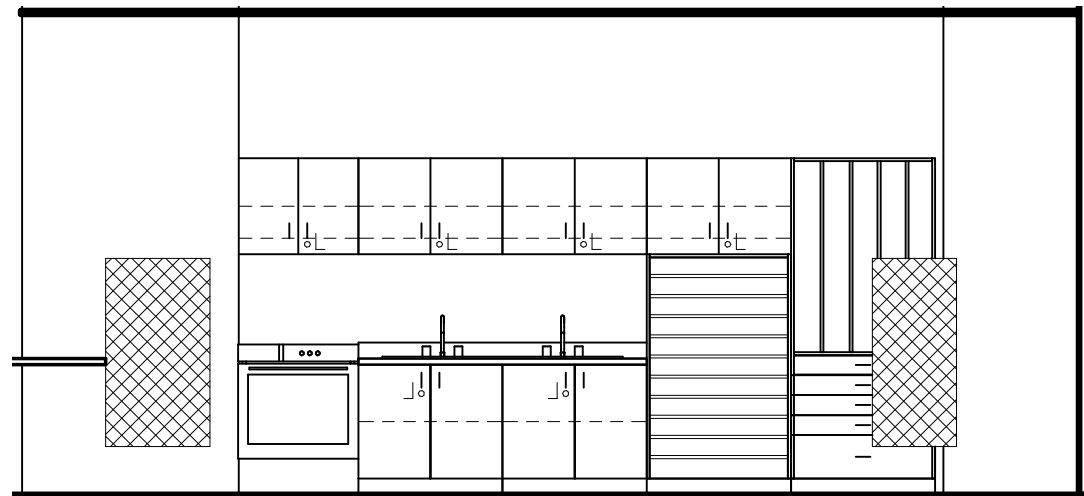
INTERDISCIPLINARY LEARNING LAB



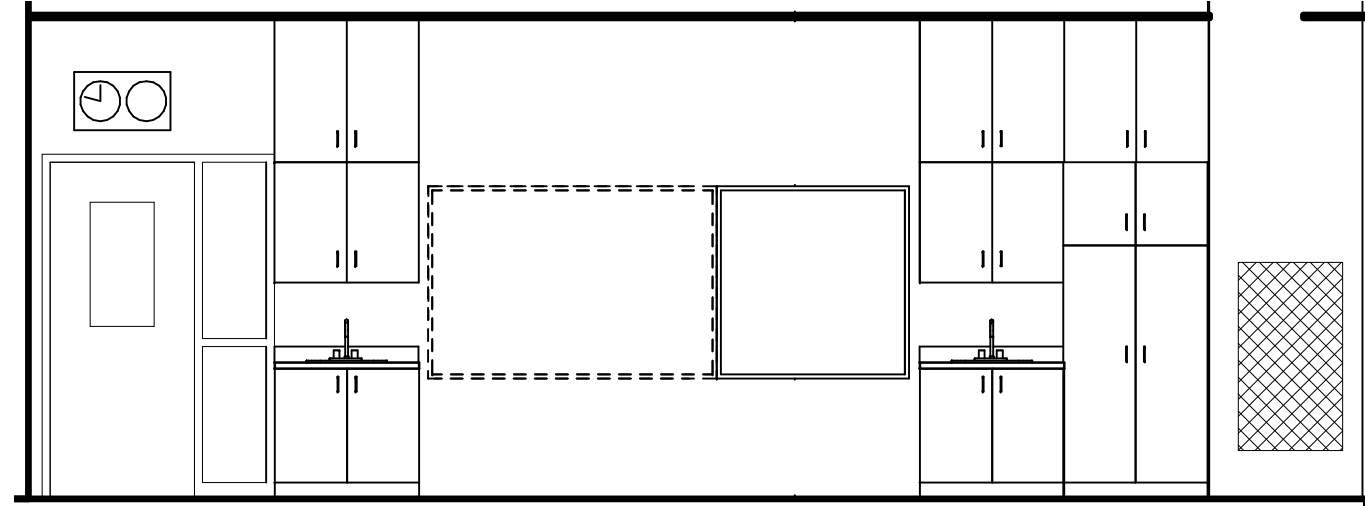
**301 - INTERDISCIPLINARY LEARNING LAB**  
 Scale: 1/4" = 1'-0"



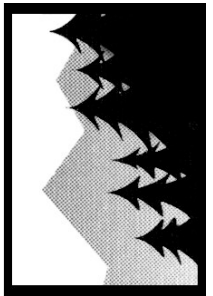
**1** INTERDISCIPLINARY LEARNING LAB - EAST  
 Scale: 1/4" = 1'-0"



**2** INTERDISCIPLINARY LEARNING LAB - SOUTH  
 Scale: 1/4" = 1'-0"



**3** INTERDISCIPLINARY LEARNING LAB - WEST  
 Scale: 1/4" = 1'-0"



SNOHOMISH SCHOOL DISTRICT NO. 201  
**MACHIAS ELEMENTARY SCHOOL**  
 231 147TH AVE SE, SNOHOMISH, WA 98290

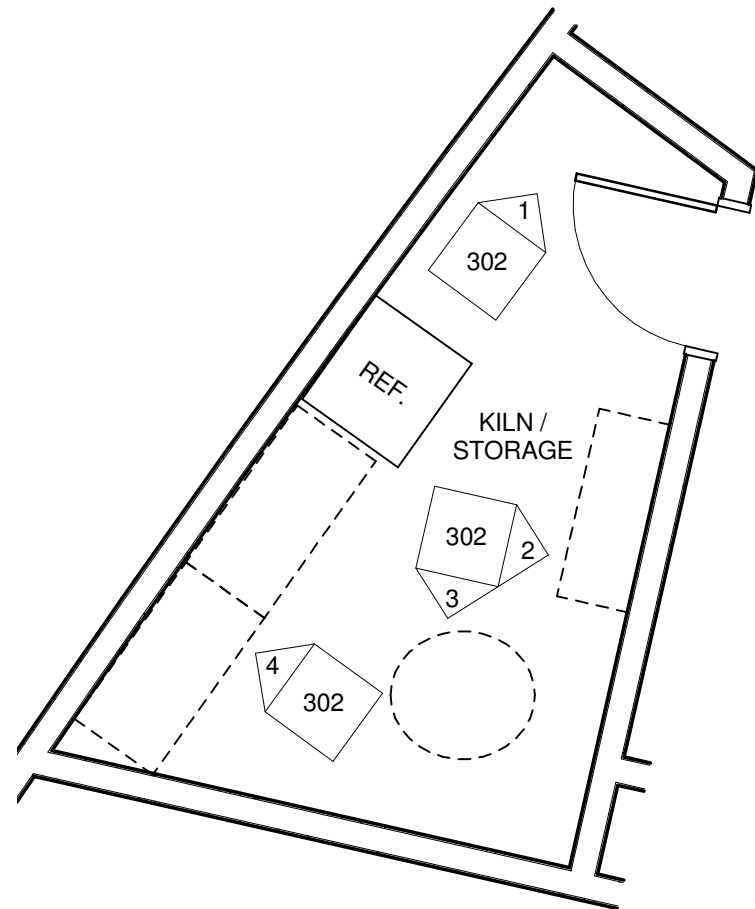
**NAC** ARCHITECTURE

NAC NO: 121-08037  
 DRAWN: Author  
 CHECKED: Checker  
 DATE: 02/04/09

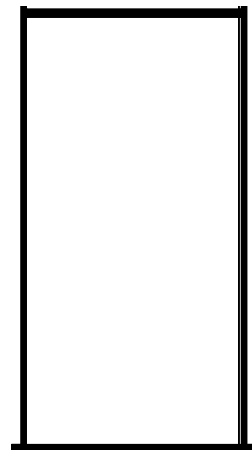
**DD**

© 2009 NAC INC  
**301-E1**  
 WWW.NACARCHITECTURE.COM

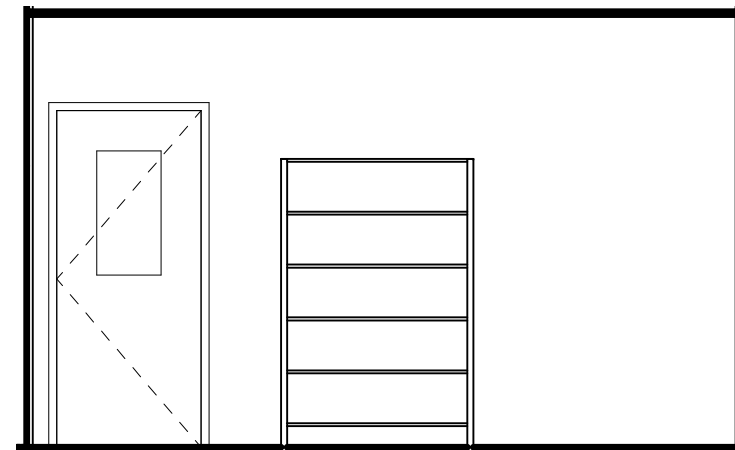
INTERDISCIPLINARY LEARNING LAB  
 INTERIOR ELEVATIONS



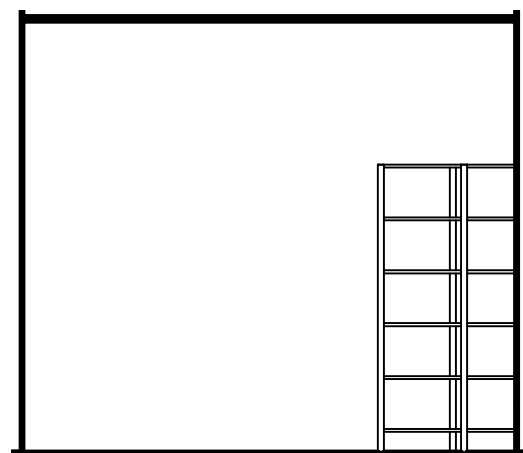
**302 - KILN / STORAGE**  
Scale: 1/4" = 1'-0"



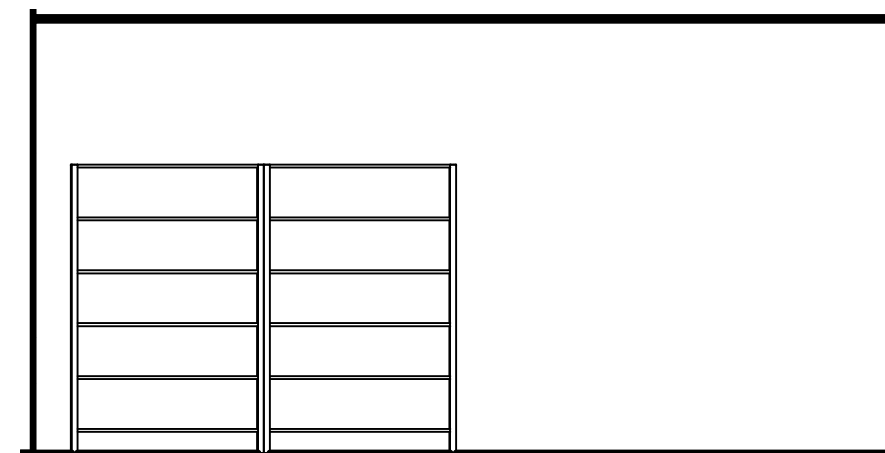
**1 KILN/STORAGE - NORTH**  
Scale: 1/4" = 1'-0"



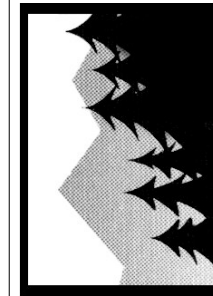
**2 KILN / STORAGE - EAST**  
Scale: 1/4" = 1'-0"



**3 KILN / STORAGE - SOUTH**  
Scale: 1/4" = 1'-0"



**4 KILN/STORAGE - WEST**  
Scale: 1/4" = 1'-0"

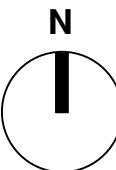
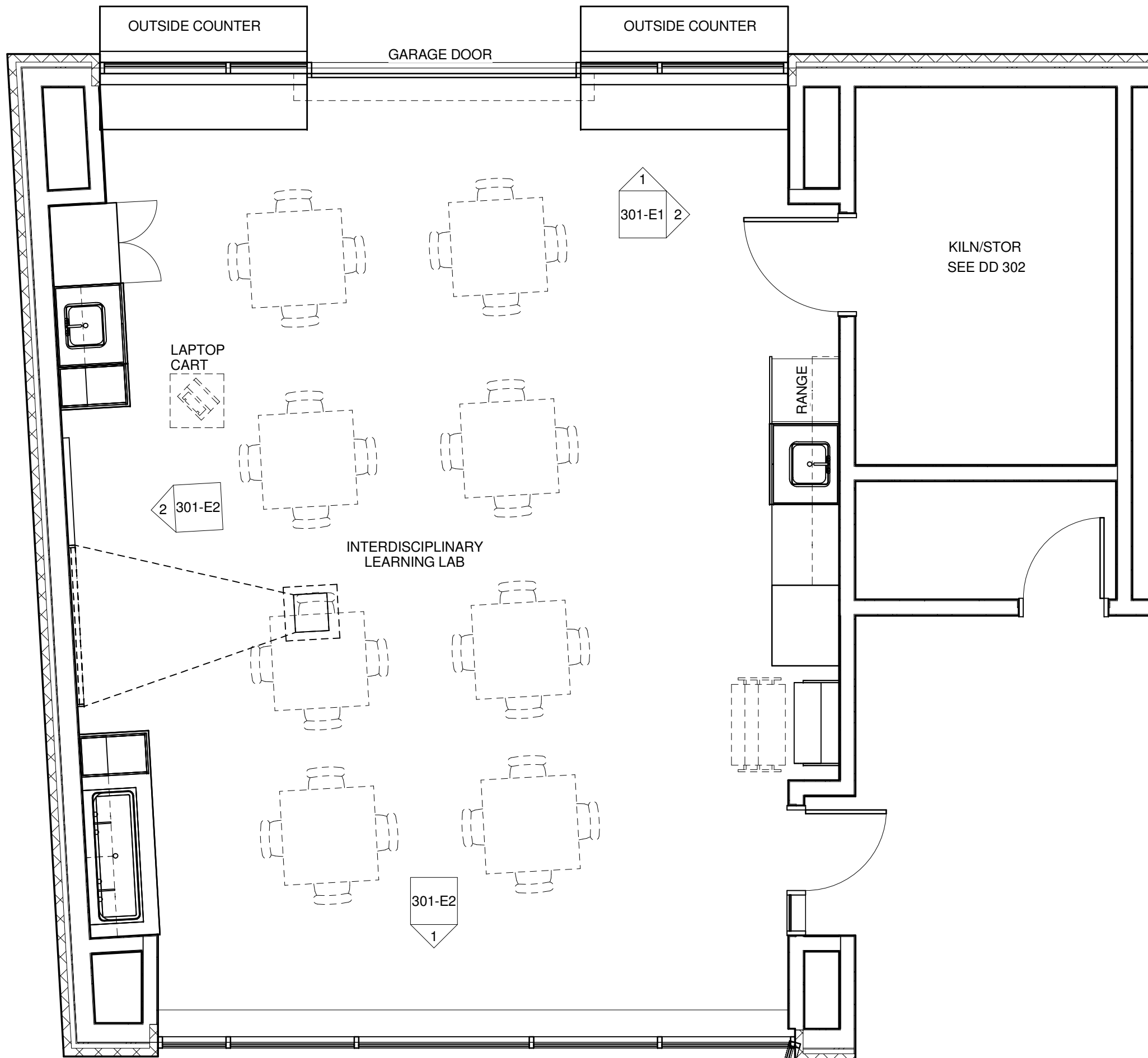


SNOHOMISH SCHOOL DISTRICT NO. 201  
**MACHIAS ELEMENTARY SCHOOL**  
231 147TH AVE SE, SNOHOMISH, WA 98290

**NAC** ARCHITECTURE

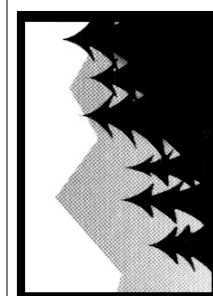
NAC NO: 121-08037  
DRAWN: Author  
CHECKED: Checker  
DATE: 02/04/09

**DD**  
**302**



**301 - INTERDISCIPLINARY LEARNING LAB**

Scale: 1/4" = 1'-0"



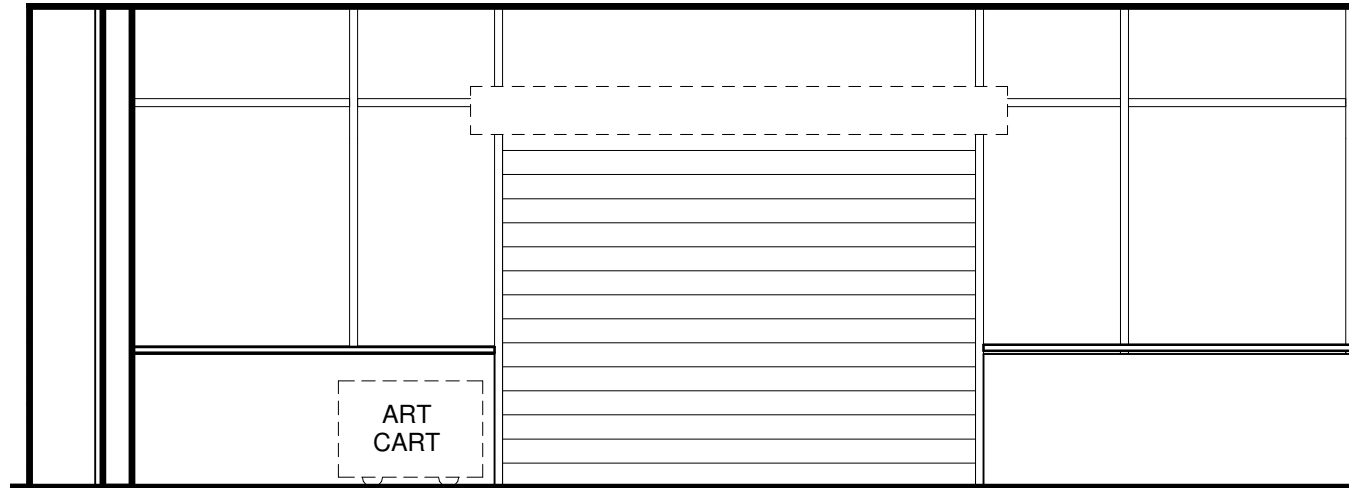
SNOHOMISH SCHOOL DISTRICT NO. 201  
**RIVERVIEW ELEMENTARY SCHOOL**  
 7322 64TH STREET SE, SNOHOMISH, WA 98290

**NAC** ARCHITECTURE

NAC NO: 121-08038  
 DRAWN: Author  
 CHECKED: Checker  
 DATE: 02/04/2009

**DD**  
**301**

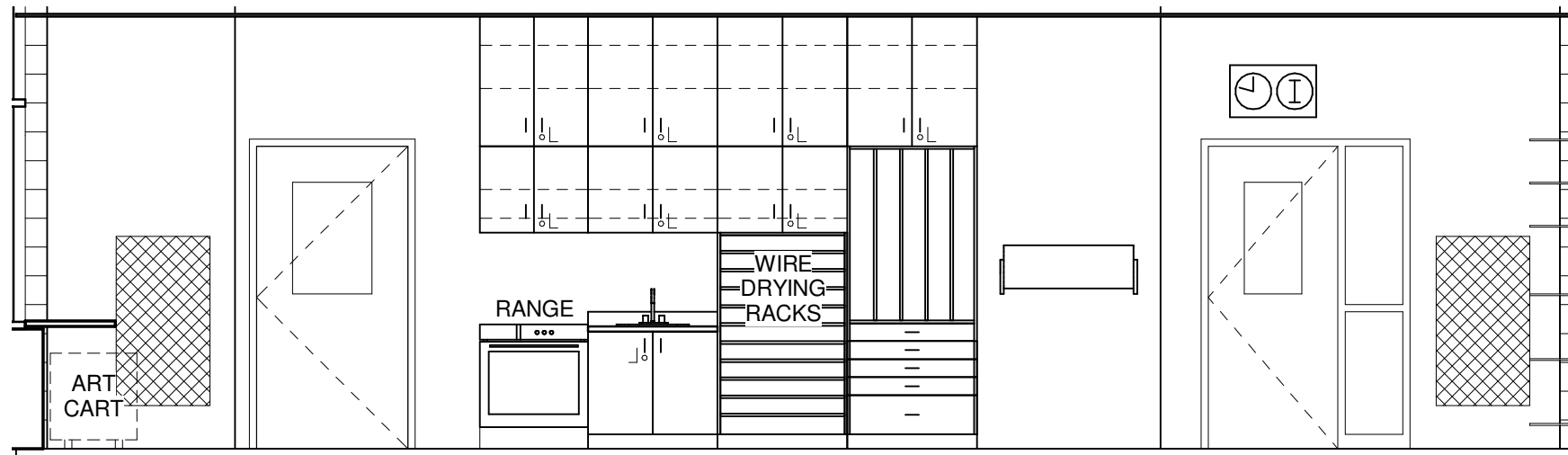
INTERDISCIPLINARY LEARNING LAB



**INTERDISCIPLINARY LEARNING LAB - NORTH**

1

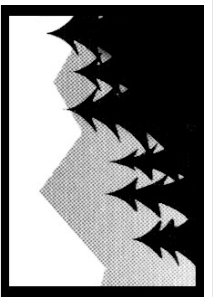
Scale: 1/4" = 1'-0"



**INTERDISCIPLINARY LEARNING LAB - EAST**

2

Scale: 1/4" = 1'-0"



SNOHOMISH SCHOOL DISTRICT NO. 201  
**RIVERVIEW ELEMENTARY SCHOOL**  
 7322 64TH STREET SE, SNOHOMISH, WA 98290

**NAC** ARCHITECTURE

2201 SIXTH AVE, SUITE 1405 | SEATTLE, WA 98121-1847 | T:206.441.4522 | F:206.441.7917

NAC NO: 121-08038  
 DRAWN: Author  
 CHECKED: Checker  
 DATE: 02/04/2009

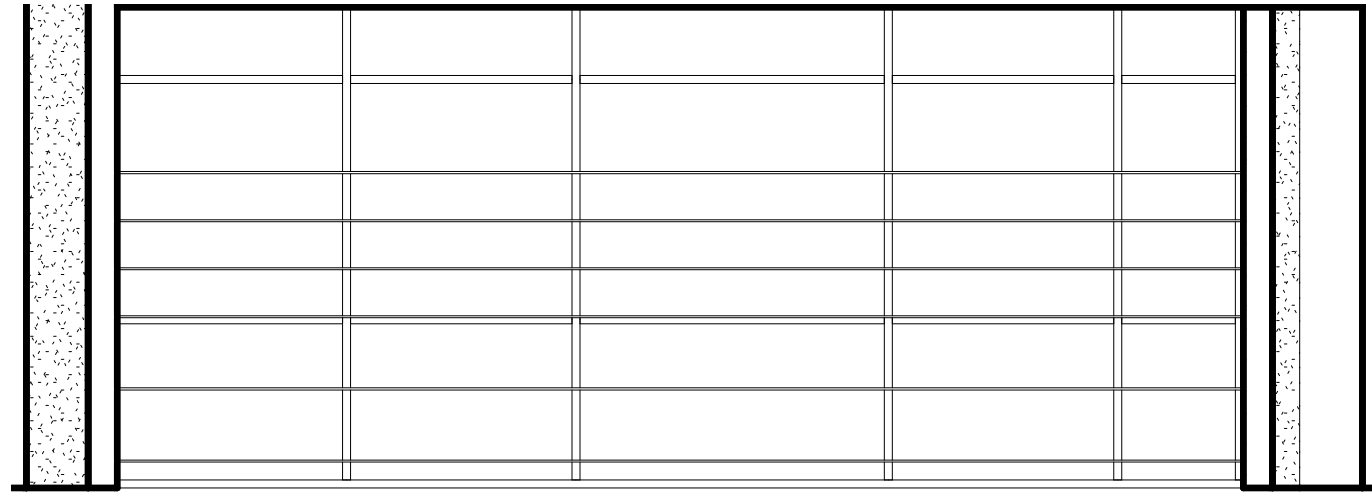
**DD**

**301-E1**

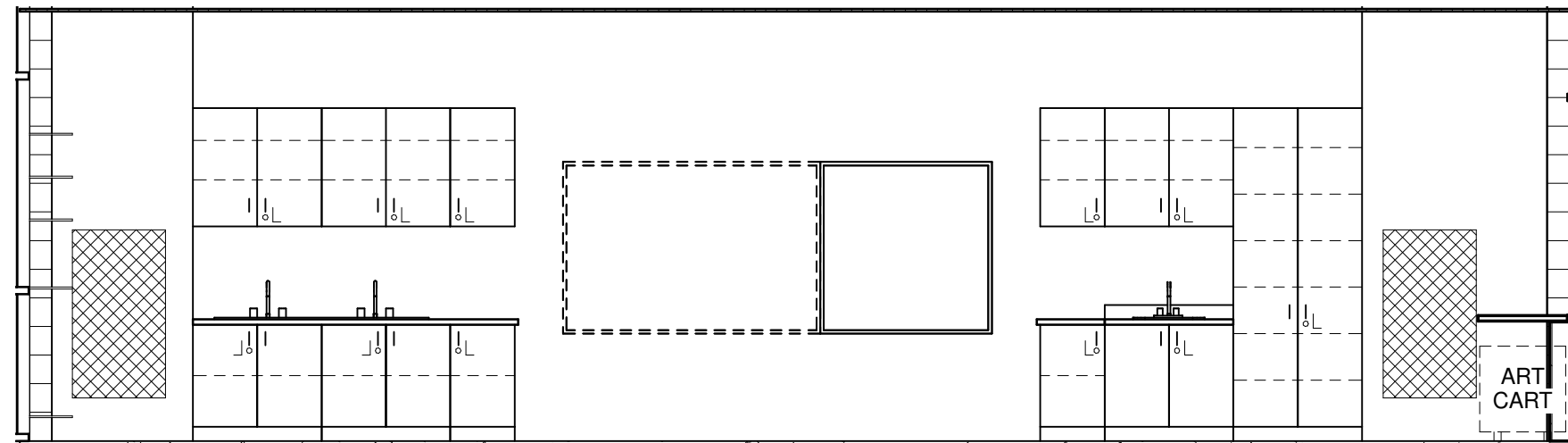
INTERDISCIPLINARY LEARNING LAB  
 INTERIOR ELEVATIONS

© 2009 NAC INC

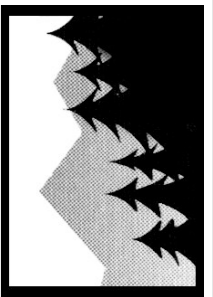
WWW.NACARCHITECTURE.COM



**1** INTERDISCIPLINARY LEARNING LAB - SOUTH  
 Scale: 1/4" = 1'-0"



**2** INTERDISCIPLINARY LEARNING LAB - WEST  
 Scale: 1/4" = 1'-0"



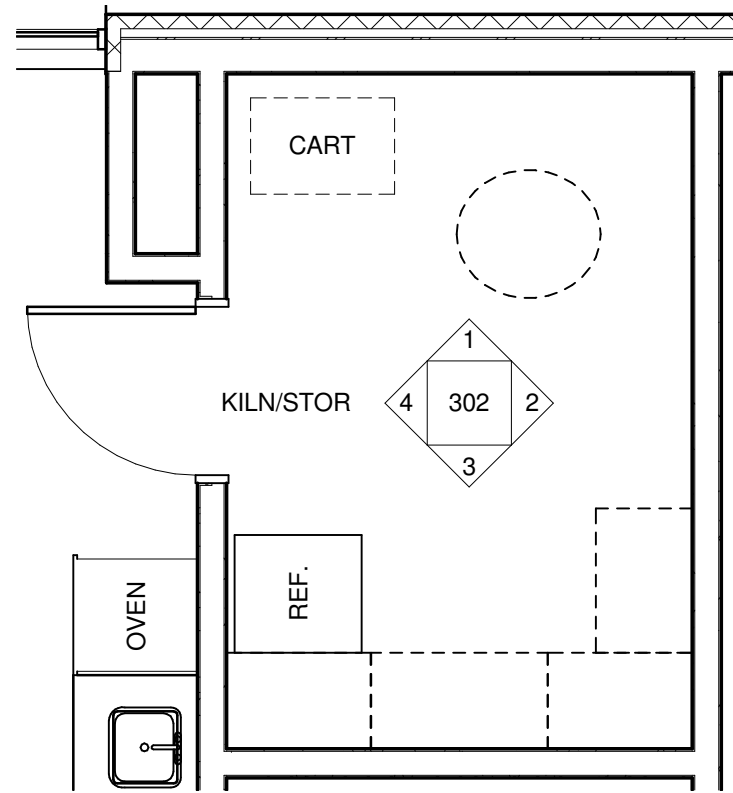
SNOHOMISH SCHOOL DISTRICT NO. 201  
**RIVERVIEW ELEMENTARY SCHOOL**  
 7322 64TH STREET SE, SNOHOMISH, WA 98290

**NAC** ARCHITECTURE

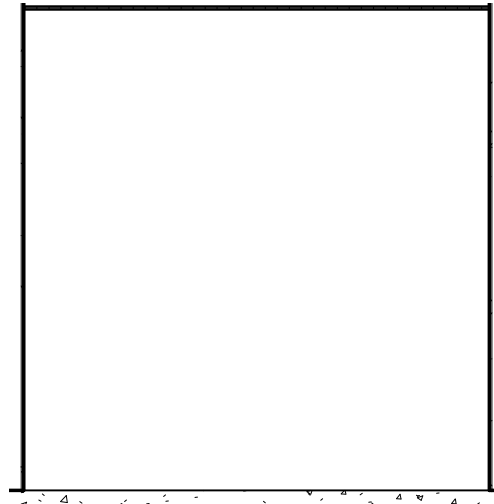
NAC NO: 121-08038  
 DRAWN: Author  
 CHECKED: Checker  
 DATE: 02/04/2009

**DD**  
**301-E2**

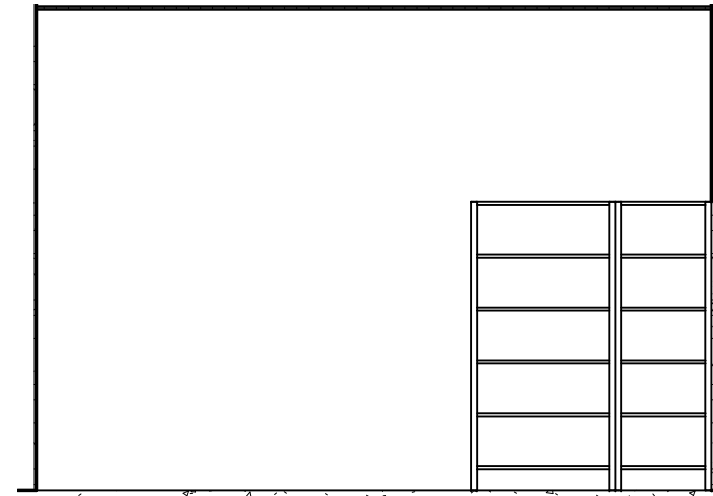
INTERDISCIPLINARY LEARNING LAB  
 INTERIOR ELEVATIONS



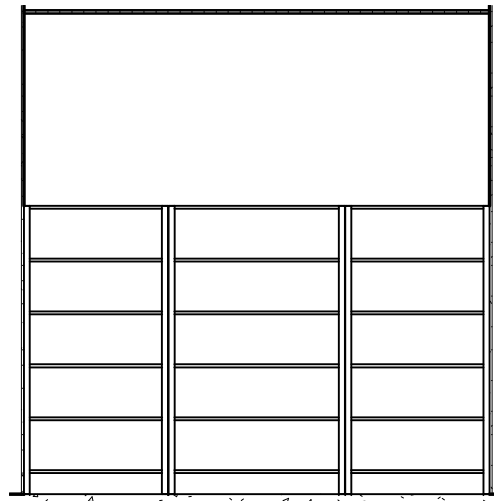
**302 - STORAGE/KILN ROOM**  
Scale: 1/4" = 1'-0"



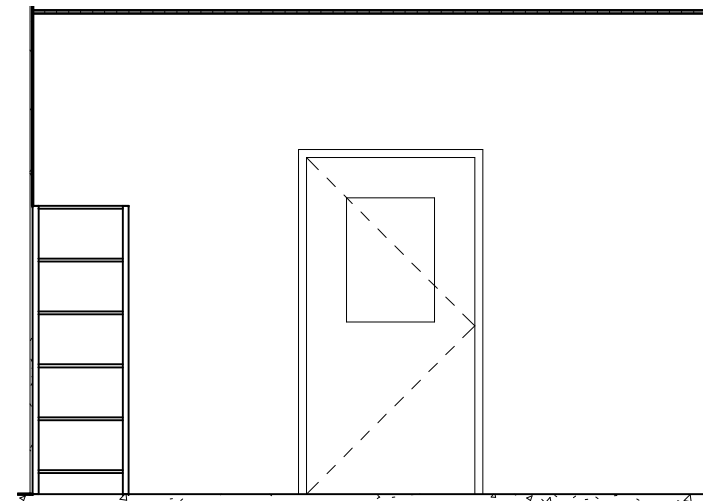
**1 STORAGE/KILN - NORTH**  
Scale: 1/4" = 1'-0"



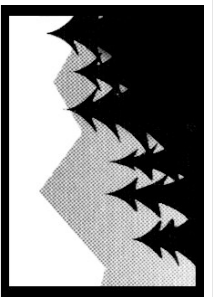
**2 STORAGE/KILN - EAST**  
Scale: 1/4" = 1'-0"



**3 STORAGE/KILN - SOUTH**  
Scale: 1/4" = 1'-0"



**4 STORAGE/KILN - WEST**  
Scale: 1/4" = 1'-0"



SNOHOMISH SCHOOL DISTRICT NO. 201  
**RIVERVIEW ELEMENTARY  
SCHOOL**  
7322 64TH STREET SE, SNOHOMISH, WA 98290

**NAC** ARCHITECTURE

NAC NO: 121-08038  
DRAWN: Author  
CHECKED: Checker  
DATE: 02/04/2009

**DD  
302**

© 2009 NAC INC

STORAGE/KILN ROOM