



SNOHOMISH SCHOOL DISTRICT NO. 201
**MACHIAS ELEMENTARY
 SCHOOL**
 231 147TH AVE SE, SNOHOMISH, WA 98290

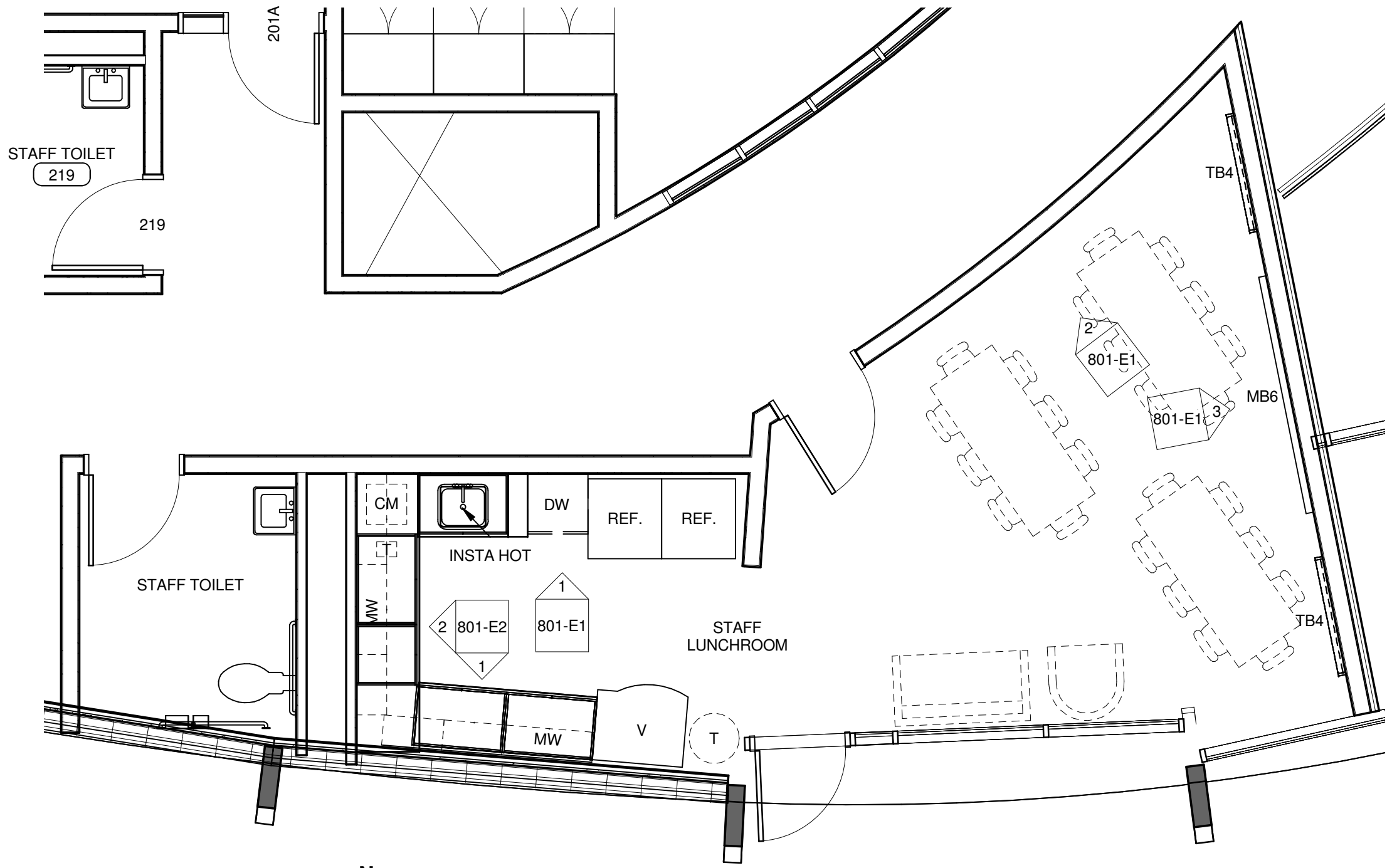
NAC ARCHITECTURE

NAC NO 121-08037
 DRAWN Author
 CHECKED Checker
 DATE: 02/04/09

DD
801

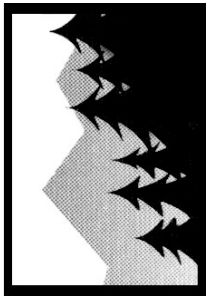
© 2009 NAC INC

2201 SIXTH AVE, SUITE 1405 | SEATTLE, WA 98121-1847 | T206-441-4522 | F206-441-7917
 WWW.NACARCHITECTURE.COM



801 - STAFF LUNCHROOM
 Scale: 1/4" = 1'-0"

STAFF LUNCHROOM



SNOHOMISH SCHOOL DISTRICT NO. 201
**MACHIAS ELEMENTARY
 SCHOOL**
 231 147TH AVE SE, SNOHOMISH, WA 98290

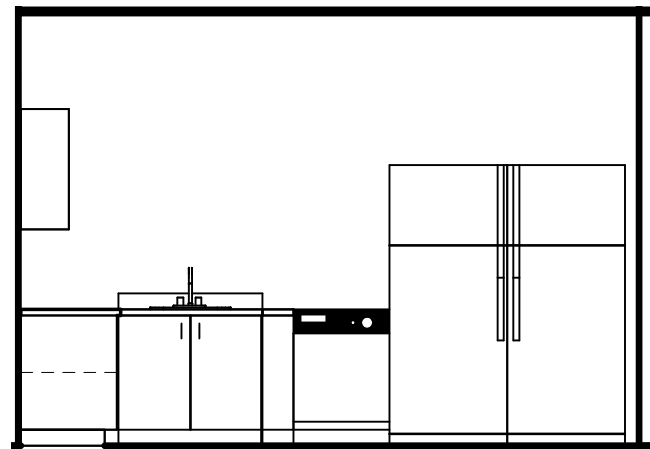
NAC | ARCHITECTURE

NAC NO: 121-08037
 DRAWN: Author
 CHECKED: Checker
 DATE: 02/04/09

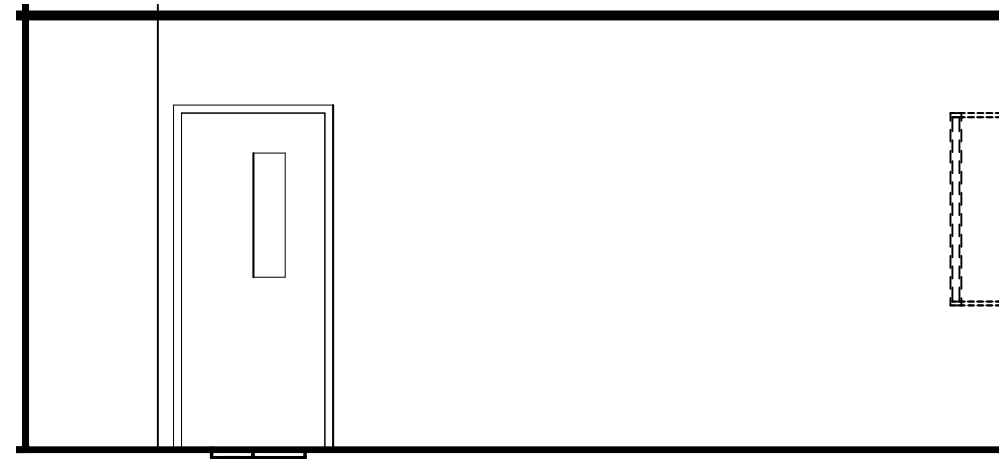
DD

801-E1

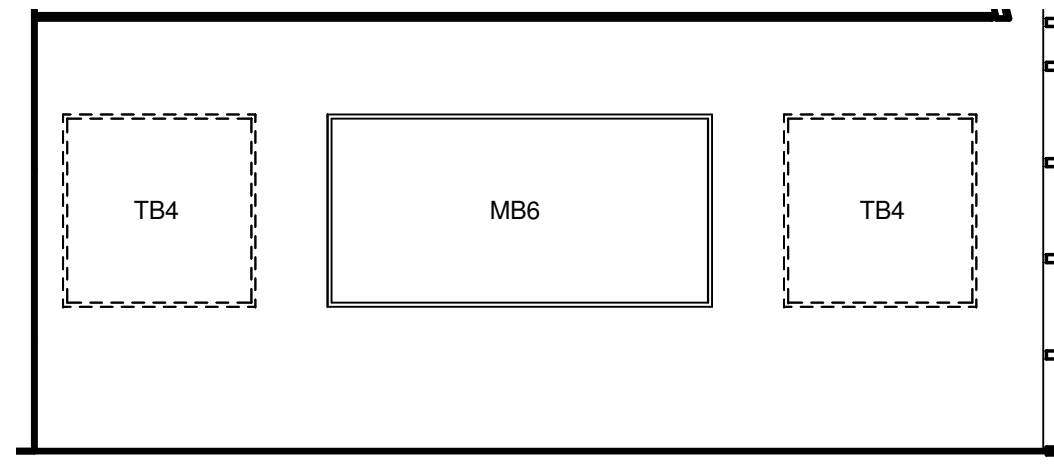
© 2009 NAC INC | 2201 SIXTH AVE, SUITE 1405 | SEATTLE, WA 98121-1847 | T: 206-441-4522 | F: 206-441-7917 | WWW.NACARCHITECTURE.COM



1 STAFF LUNCHROOM - 1ST NORTH
 Scale: 1/4" = 1'-0"

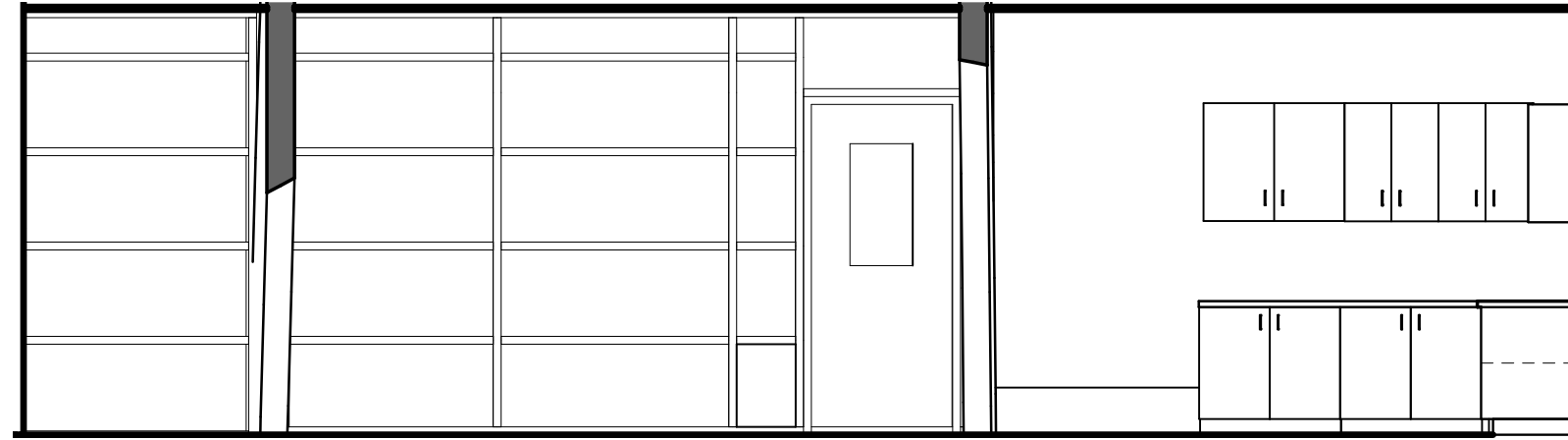


2 STAFF LUNCHROOM - 2ND NORTH
 Scale: 1/4" = 1'-0"

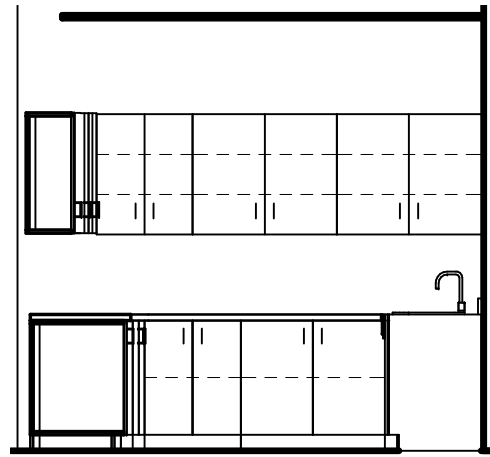


3 STAFF LUNCHROOM - EAST
 Scale: 1/4" = 1'-0"

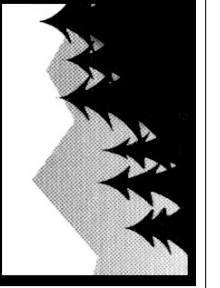
STAFF LUNCHROOM INTERIOR
 ELEVATIONS



1 STAFF LUNCHROOM - SOUTH
Scale: 1/4" = 1'-0"



2 STAFF LUNCHROOM - WEST
Scale: 1/4" = 1'-0"



SNOHOMISH SCHOOL DISTRICT NO. 201
**MACHIAS ELEMENTARY
SCHOOL**
231 147TH AVE SE, SNOHOMISH, WA 98290

NAC | ARCHITECTURE

NAC NO: 121-08037
DRAWN: Author
CHECKED: Checker
DATE: 02/04/09

DD

© 2009 NAC INC
801-E2
WWW.NACARCHITECTURE.COM

STAFF LUNCHROOM INTERIOR
ELEVATIONS



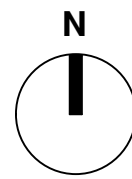
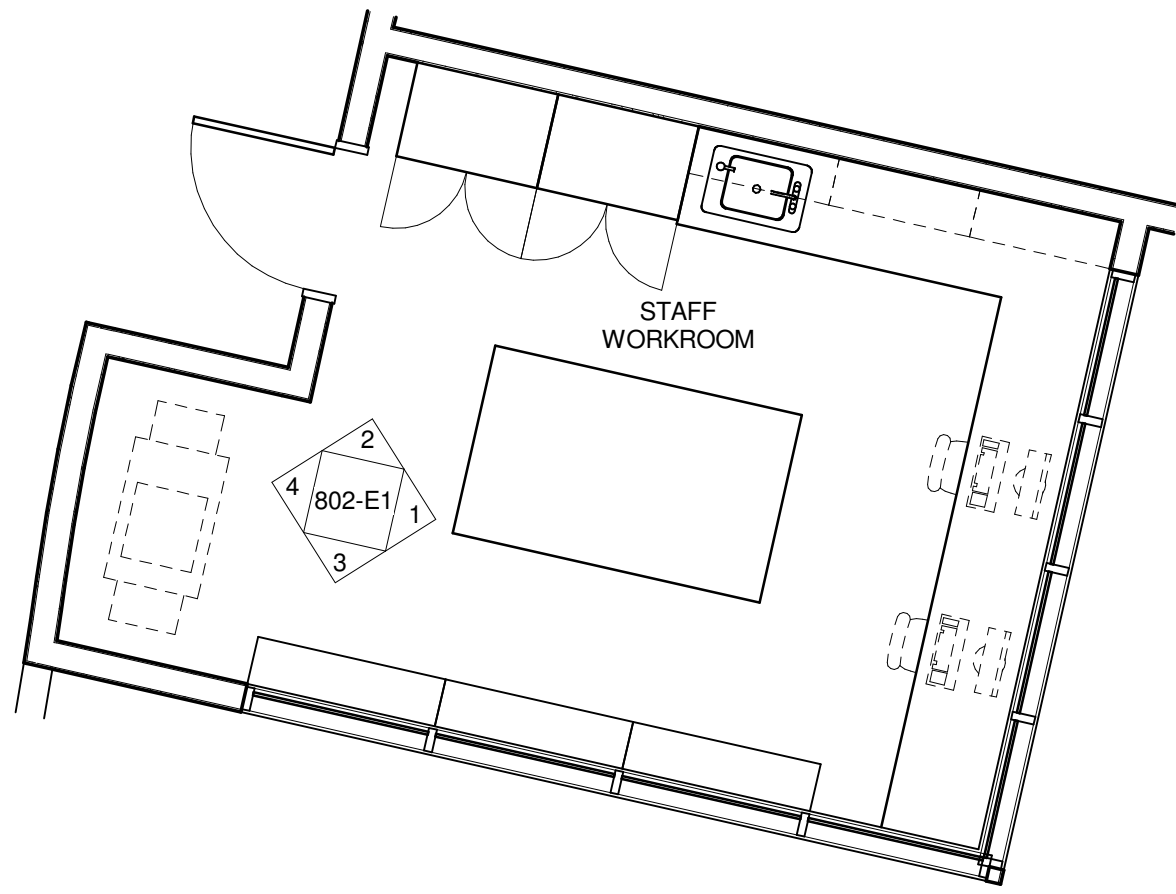
SNOHOMISH SCHOOL DISTRICT NO. 201
**MACHIAS ELEMENTARY
 SCHOOL**
 231 147TH AVE SE, SNOHOMISH, WA 98290

NAC | ARCHITECTURE

NAC NO: 121-08037
 DRAWN: Author
 CHECKED: Checker
 DATE: 02/04/09

DD
802

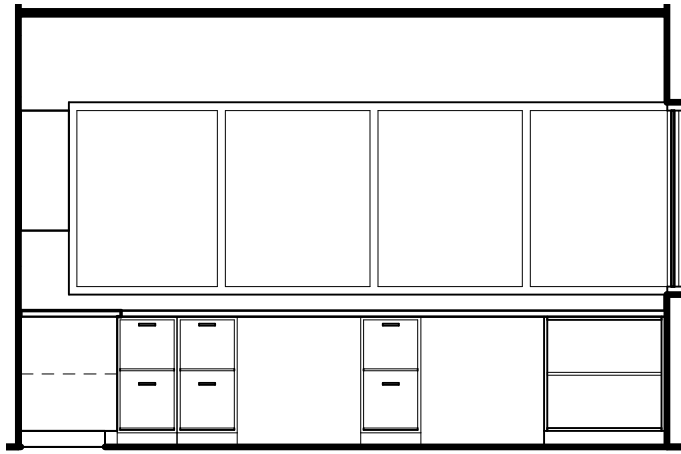
© 2009 NAC INC | 2201 SIXTH AVE, SUITE 1405 | SEATTLE, WA 98121-1847 | T: 206-441-4522 | F: 206-441-7917 | WWW.NACARCHITECTURE.COM



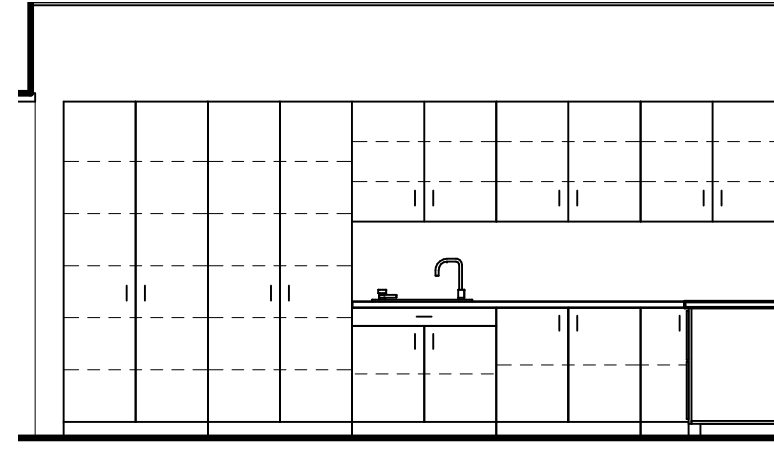
802 - STAFF WORKROOM

Scale: 1/4" = 1'-0"

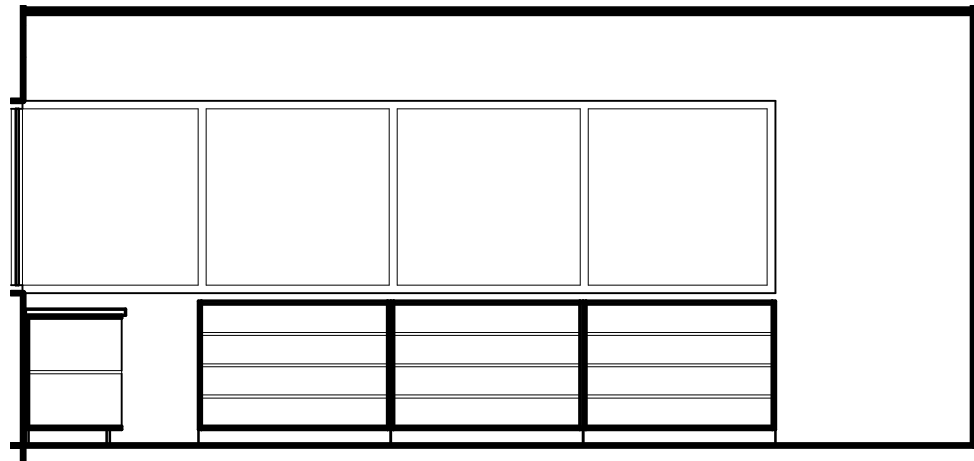
STAFF WORKROOM



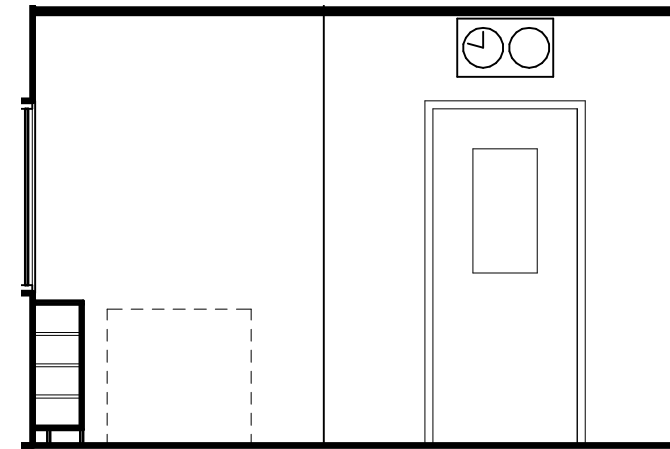
1 STAFF WORKROOM - EAST
Scale: 1/4" = 1'-0"



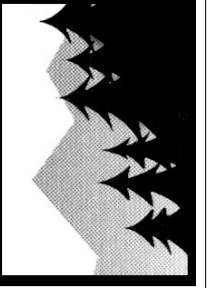
2 STAFF WORKROOM - NORTH
Scale: 1/4" = 1'-0"



3 STAFF WORKROOM - SOUTH
Scale: 1/4" = 1'-0"



4 STAFF WORKROOM - WEST
Scale: 1/4" = 1'-0"



SNOHOMISH SCHOOL DISTRICT NO. 201
**MACHIAS ELEMENTARY
SCHOOL**
231 147TH AVE SE, SNOHOMISH, WA 98290

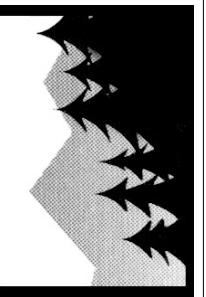
NAC | ARCHITECTURE

NAC NO: 121-08037
DRAWN: Author
CHECKED: Checker
DATE: 02/04/09

DD

802-E1

STAFF WORKROOM INTERIOR
ELEVATIONS



SNOHOMISH SCHOOL DISTRICT NO. 201
**RIVERVIEW ELEMENTARY
 SCHOOL**
 7322 64TH STREET SE, SNOHOMISH, WA 98290

NAC ARCHITECTURE

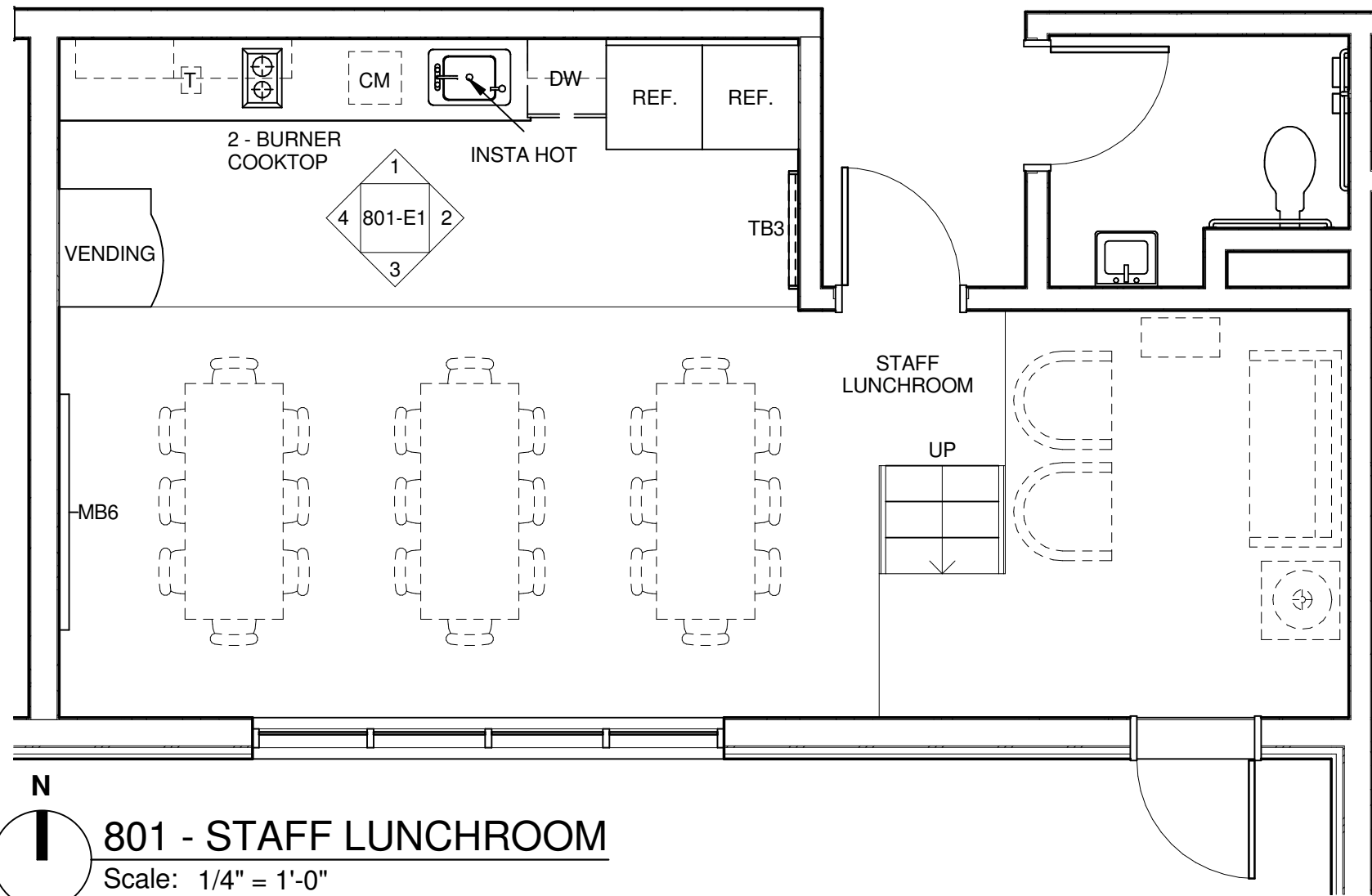
2201 SIXTH AVE, SUITE 1405 | SEATTLE, WA 98121-1847 | T:206.441.4522 | F:206.441.7917

NAC NO 121-08038
 DRAWN Author
 CHECKED Checker
 DATE: 02/04/2009

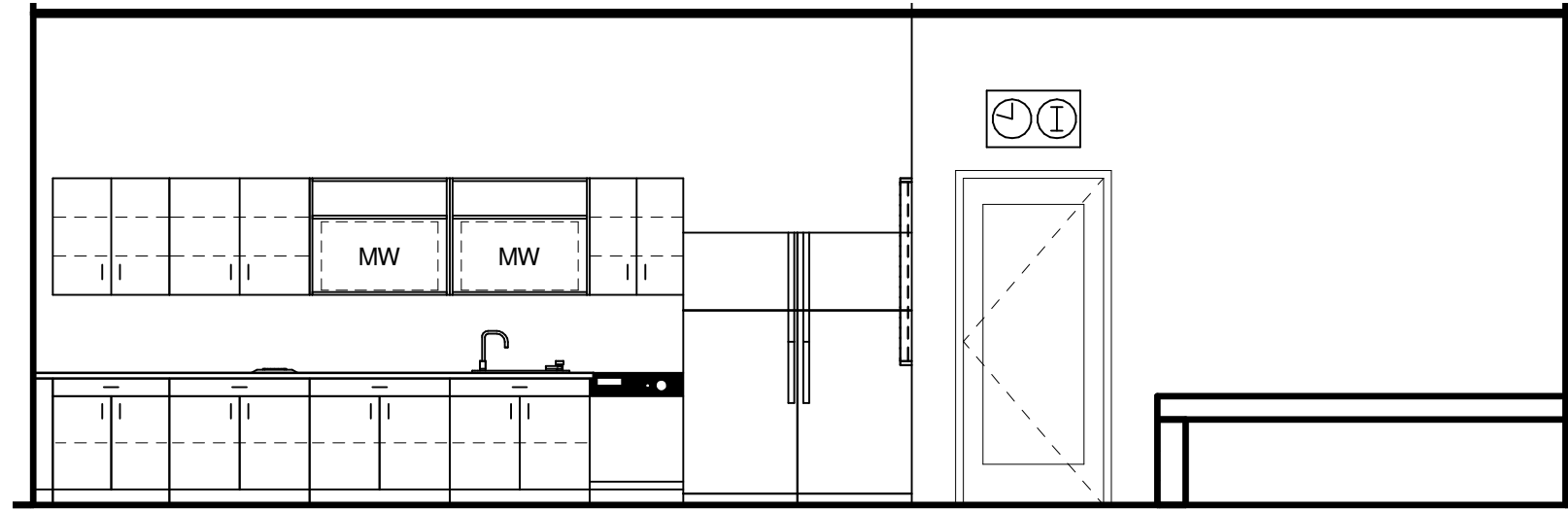
**DD
 801**

© 2009 NAC INC

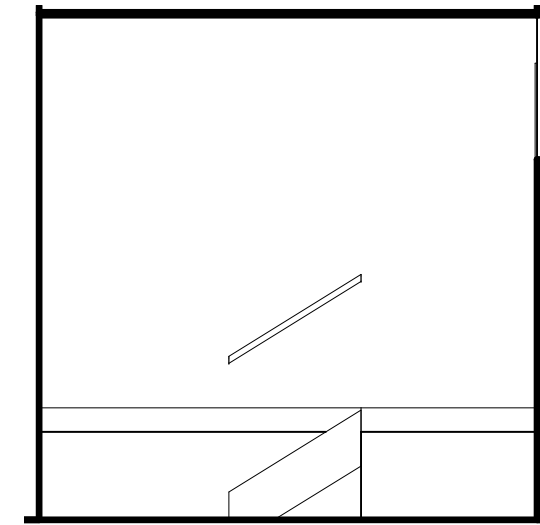
WWW.NACARCHITECTURE.COM



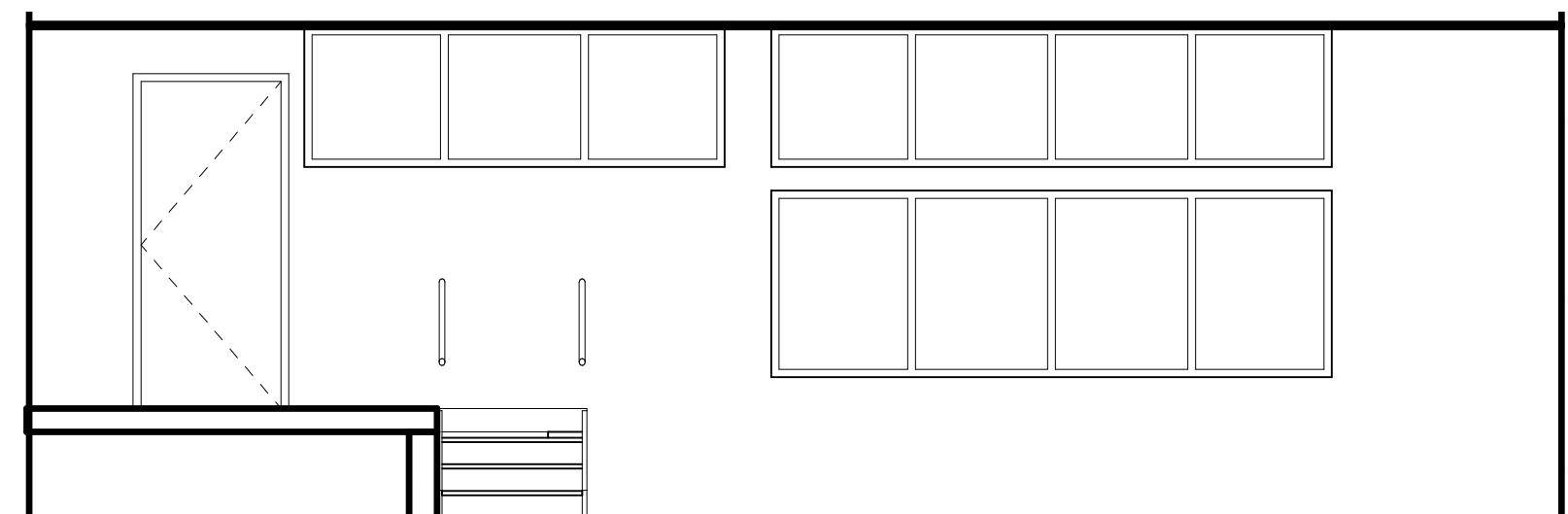
801 - STAFF LUNCHROOM
 Scale: 1/4" = 1'-0"



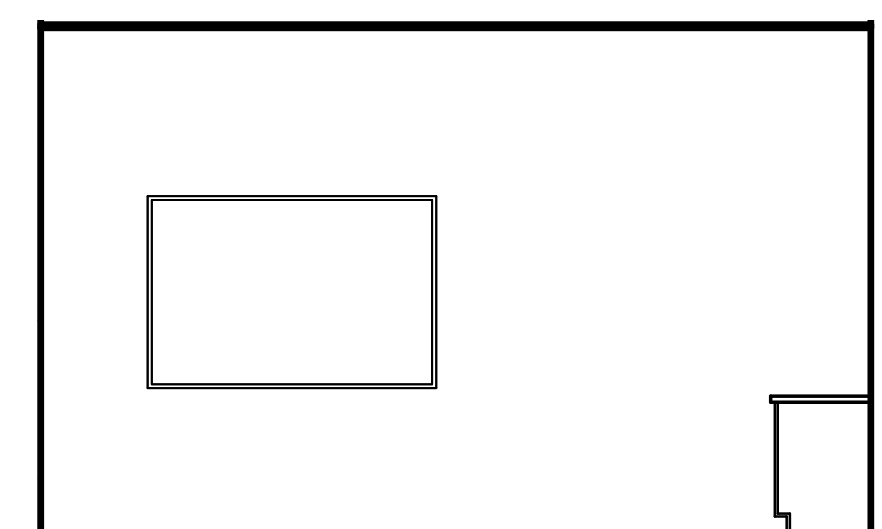
1 STAFF LUNCHROOM - NORTH
Scale: 1/4" = 1'-0"



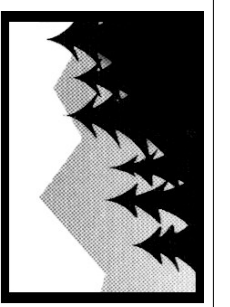
2 STAFF LUNCHROOM - EAST
Scale: 1/4" = 1'-0"



3 STAFF LUNCHROOM - SOUTH
Scale: 1/4" = 1'-0"



4 STAFF LUNCHROOM - WEST
Scale: 1/4" = 1'-0"



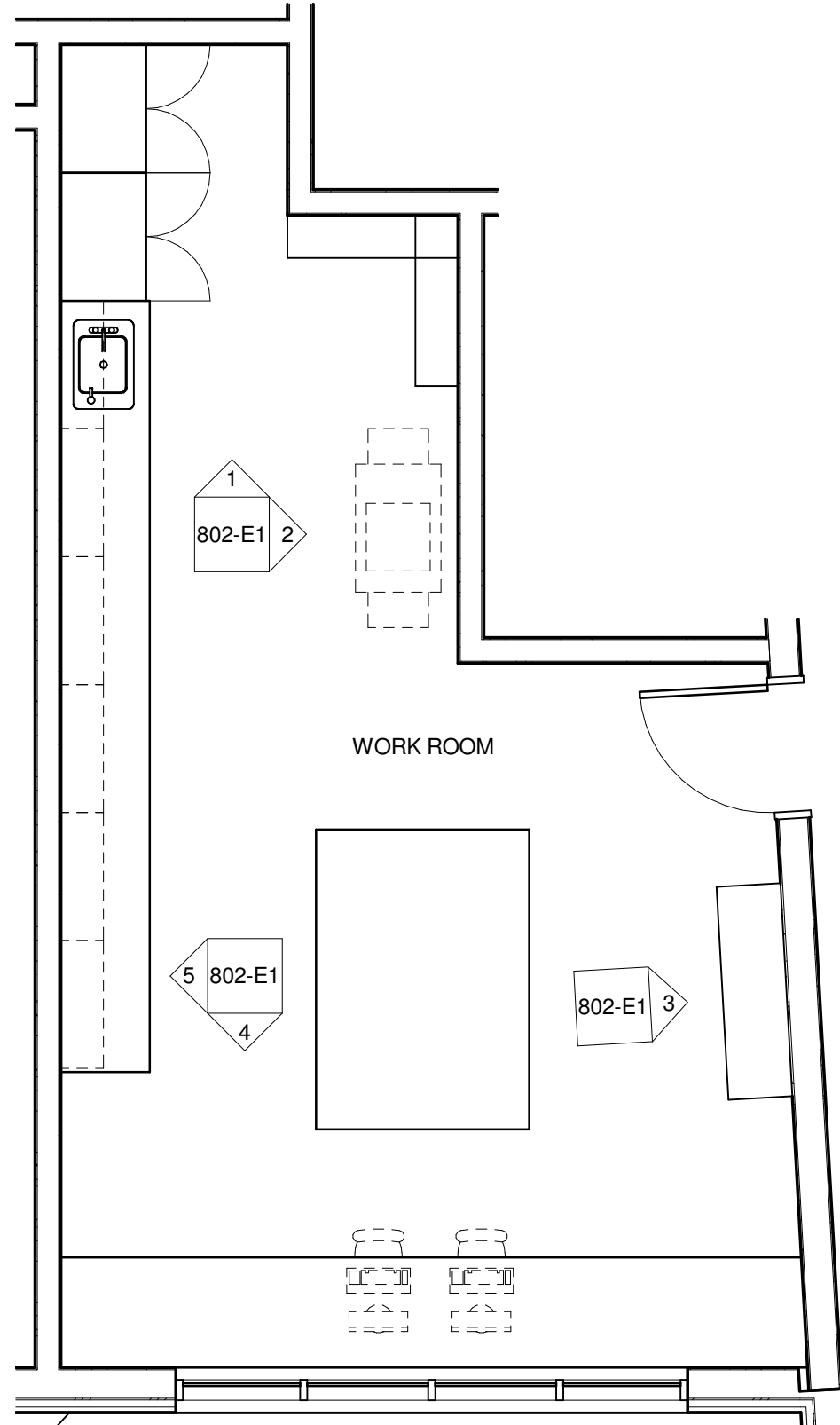
SNOHOMISH SCHOOL DISTRICT NO. 201
**RIVERVIEW ELEMENTARY
SCHOOL**
7322 64TH STREET SE, SNOHOMISH, WA 98290

NAC ARCHITECTURE

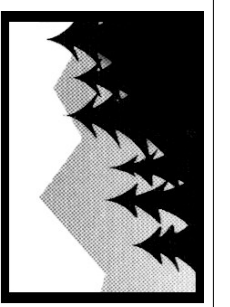
NAC NO	121-08038
DRAWN	Author
CHECKED	Checker
DATE:	02/04/2009

DD
801-E1

STAFF LUNCHROOM INTERIOR
ELEVATIONS



N
802 - WORKROOM
 Scale: 1/4" = 1'-0"



SNOHOMISH SCHOOL DISTRICT NO. 201
**RIVERVIEW ELEMENTARY
 SCHOOL**
 7322 64TH STREET SE, SNOHOMISH, WA 98290

NAC | ARCHITECTURE

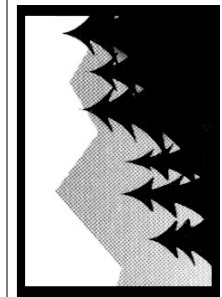
NAC NO 121-08038
 DRAWN Author
 CHECKED Checker
 DATE: 02/04/2009

DD
802

WORKROOM

© 2009 NAC INC

2201 SIXTH AVE, SUITE 1405 | SEATTLE, WA 98121-1847 | T:206.441.4522 | F:206.441.7917
 WWW.NACARCHITECTURE.COM



SNOHOMISH SCHOOL DISTRICT NO. 201
**RIVERVIEW ELEMENTARY
 SCHOOL**
 7322 64TH STREET SE, SNOHOMISH, WA 98290

NAC ARCHITECTURE

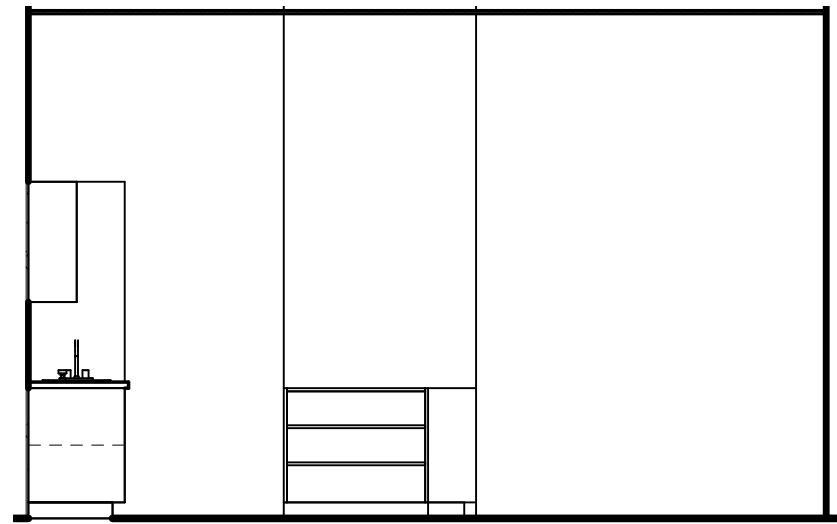
2201 SIXTH AVE, SUITE 1405 | SEATTLE, WA 98121-1847 | T:206.441.4522 | F:206.441.7917

NAC NO 121-08038
 DRAWN Author
 CHECKED Checker
 DATE: 02/04/2009

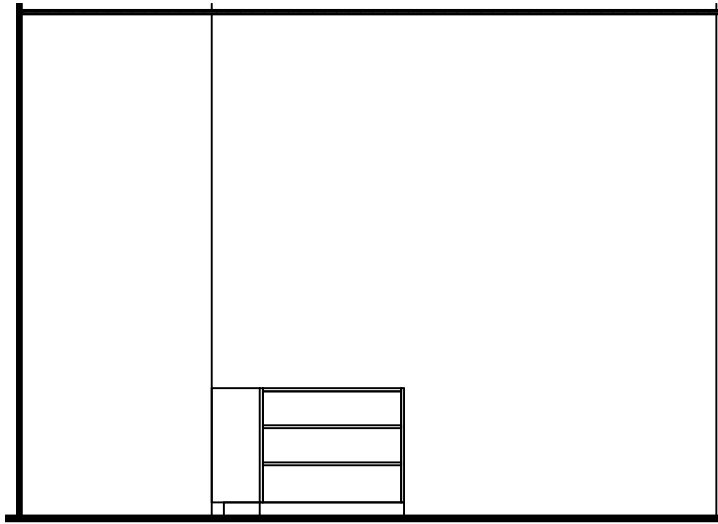
DD

802-E1

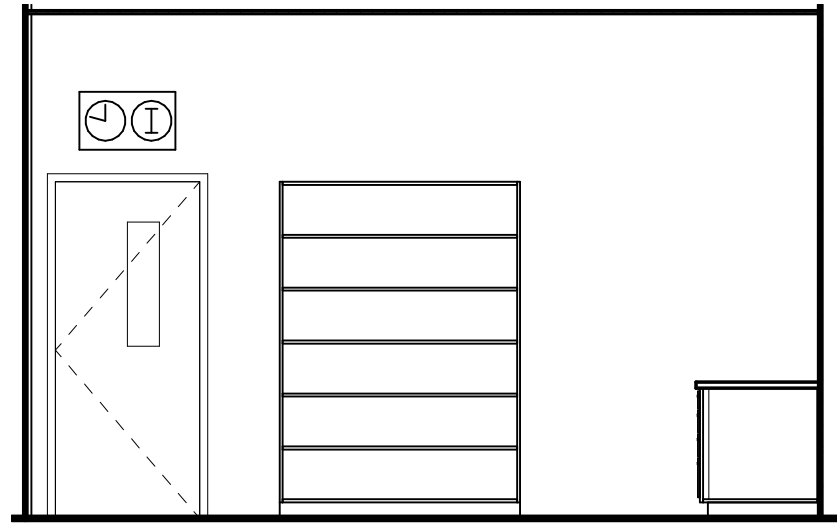
© 2009 NAC INC
 WWW.NACARCHITECTURE.COM



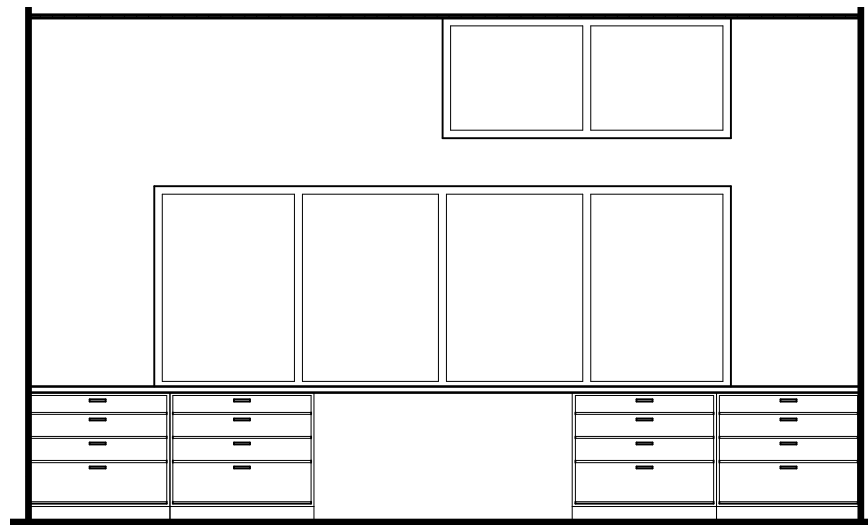
1 **WORKROOM - NORTH**
 Scale: 1/4" = 1'-0"



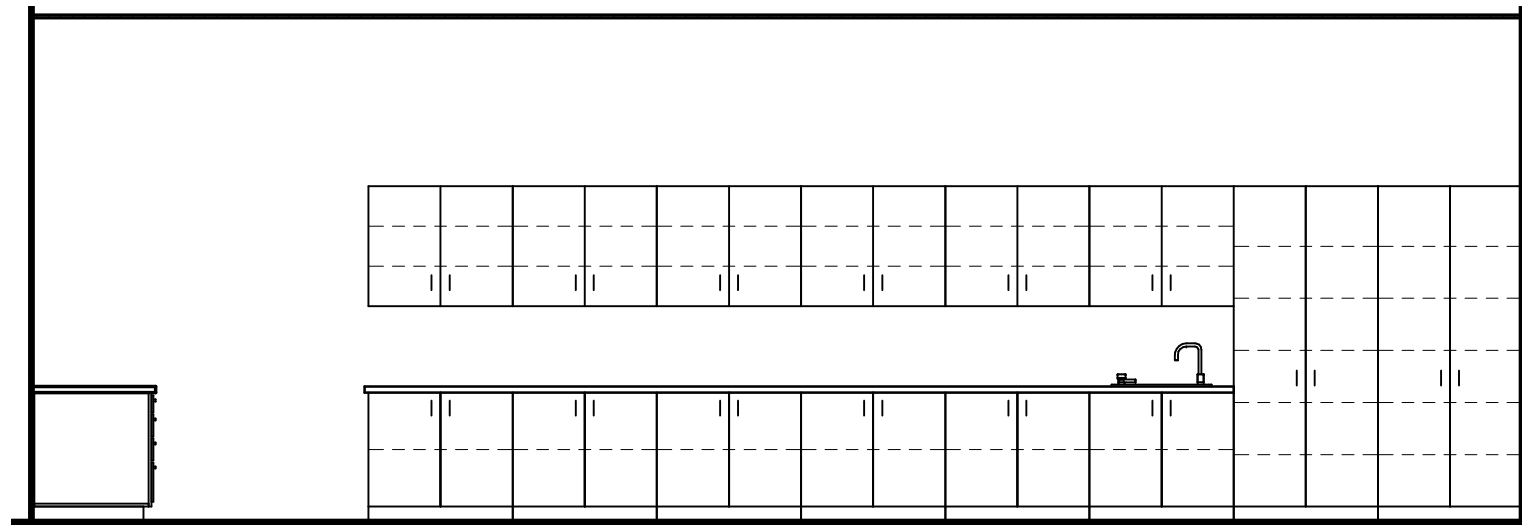
2 **WORKROOM - EAST 1**
 Scale: 1/4" = 1'-0"



3 **WORKROOM - EAST 2**
 Scale: 1/4" = 1'-0"



4 **WORKROOM - SOUTH**
 Scale: 1/4" = 1'-0"



5 **WORKROOM - WEST**
 Scale: 1/4" = 1'-0"