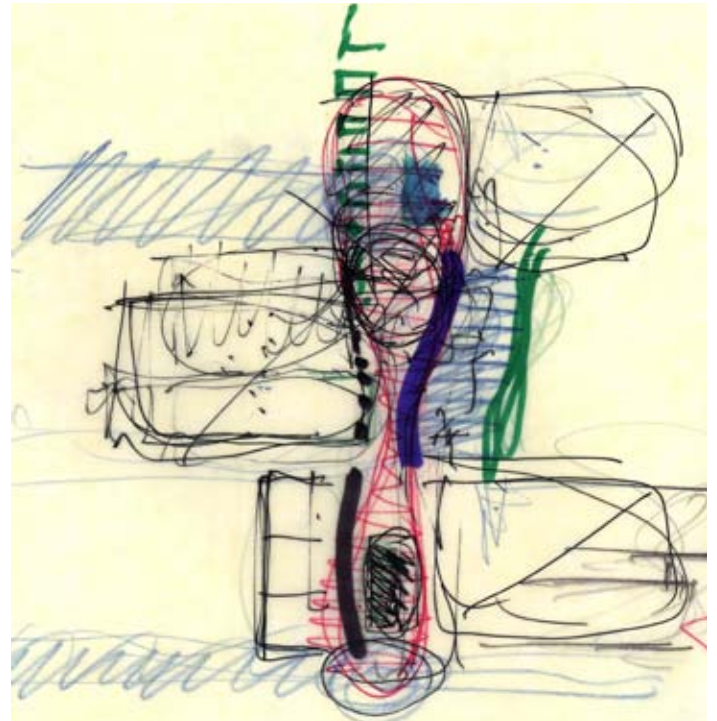
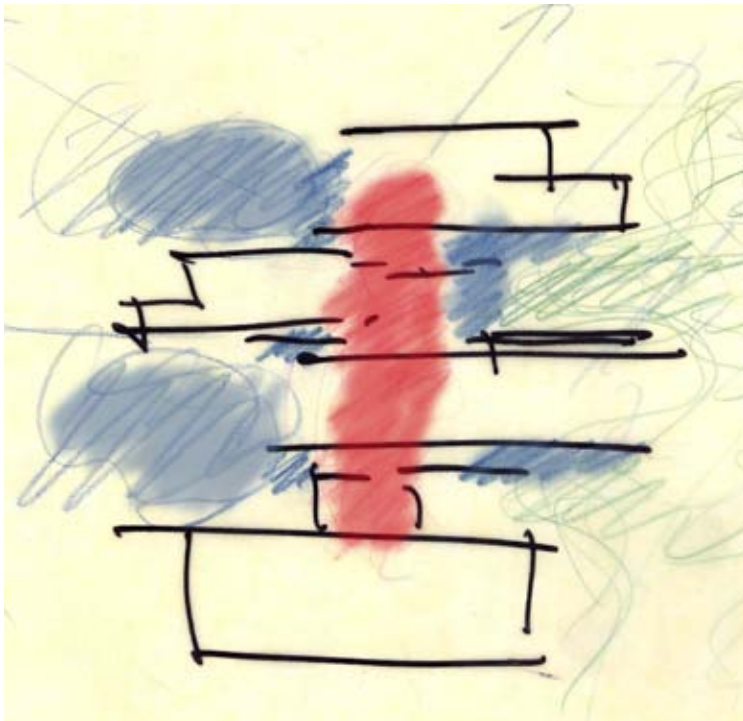


RIVERVIEW ELEMENTARY SCHOOL

ELEMENTAL FLOW

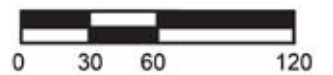
By understanding how the green space can flow across the site from the east, and how people and circulation move across the site from the west, the elements of the building can be woven into the flow of nature & people.

- The social core of the school connects the people, nature, and building elements, creating a layered connection between the community and the school.
- The main office has a broad entry plaza in front, welcoming the community to the school.
- The classrooms branch off each side of the social core. Each branch has a group of 4 classrooms with a shared area that opens to the green space.
- The library projects from the 2nd floor over the front of the school as a visual expression that learning is front and center at Riverview. The view from the library opens to the Olympic Mountains and Mount Baker.
- The gym and commons anchor the social core to the south – the “pond” that collects the river of movement through the school, serving as a buffer to noisier playfields.





Site Plan



ELEMENTAL FLOW
Riverview Elementary School

NAC | ARCHITECTURE

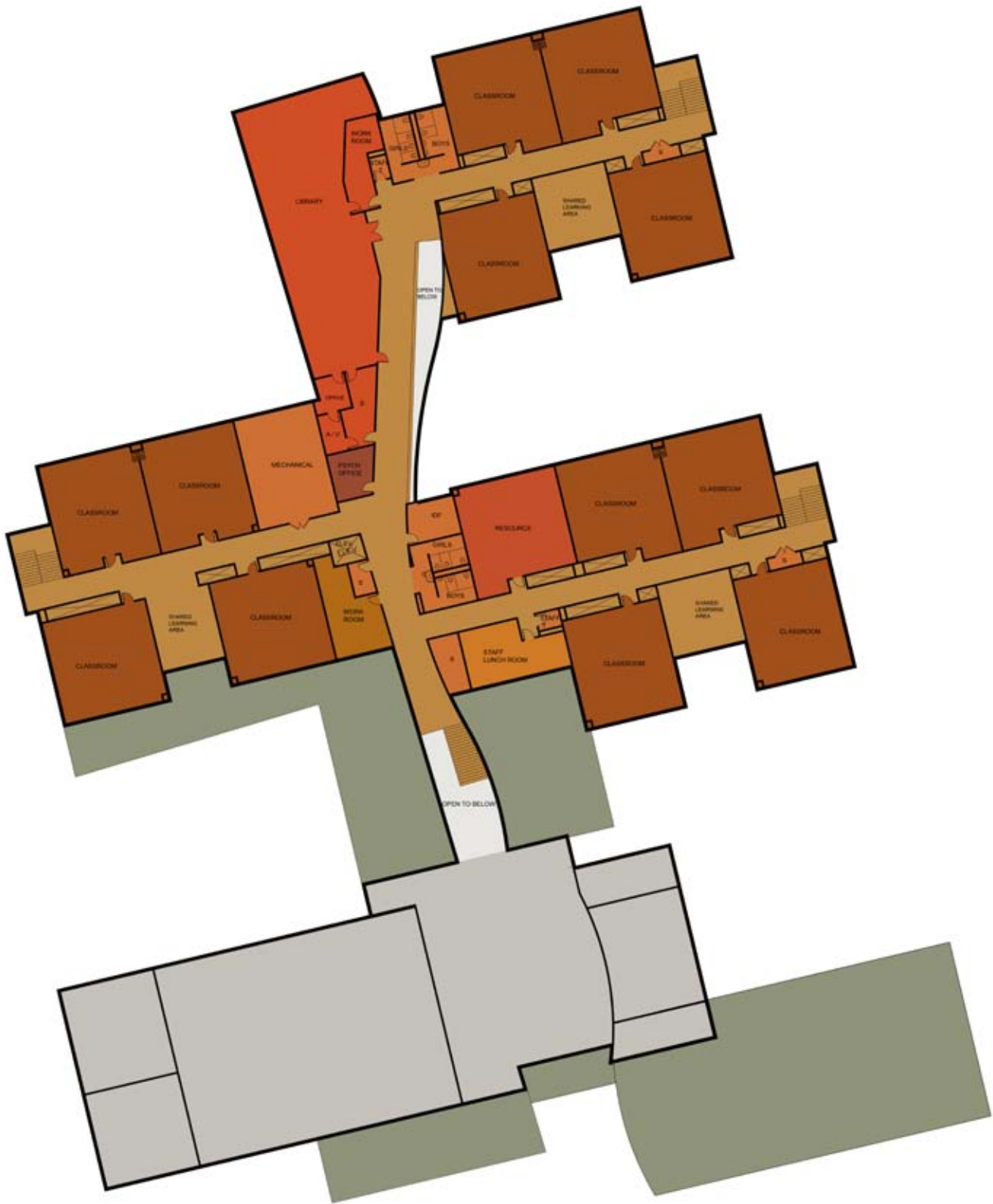


First Floor Plan



ELEMENTAL FLOW
Riverview Elementary School

NAC | ARCHITECTURE



Second Floor Plan





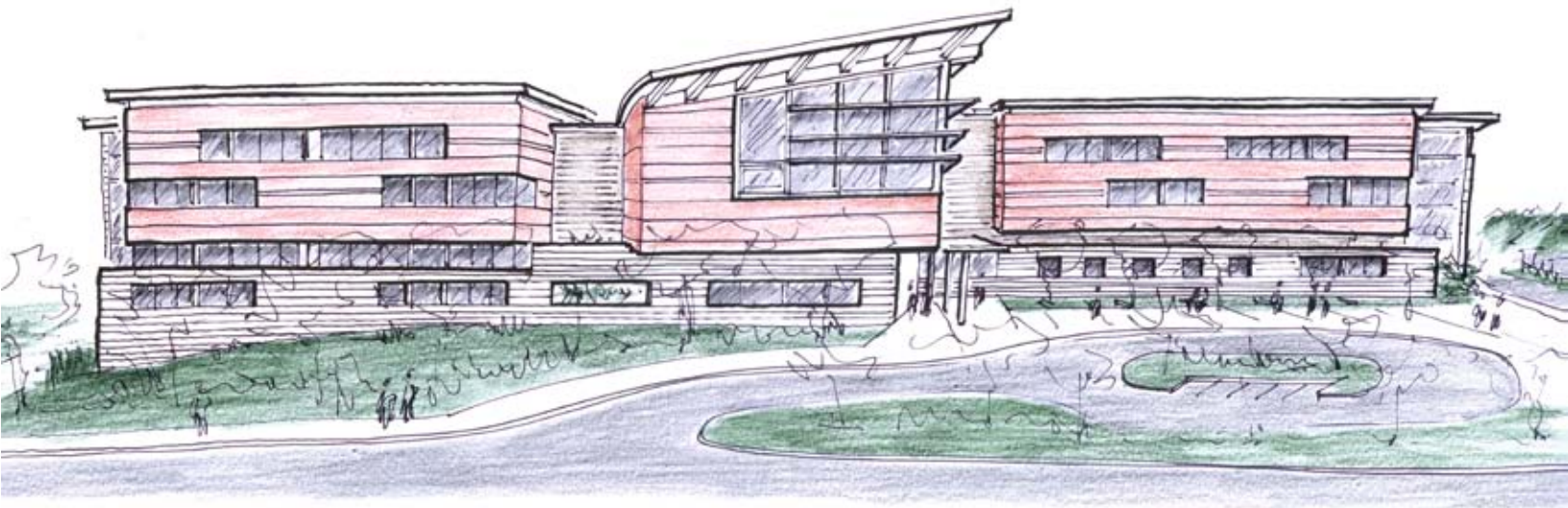
View of Entry Plaza



View From Wetlands

ELEMENTAL FLOW
Riverview Elementary School

NAC | ARCHITECTURE



View From Street



Second Floor Social Core

ELEMENTAL FLOW
Riverview Elementary School

NAC | ARCHITECTURE